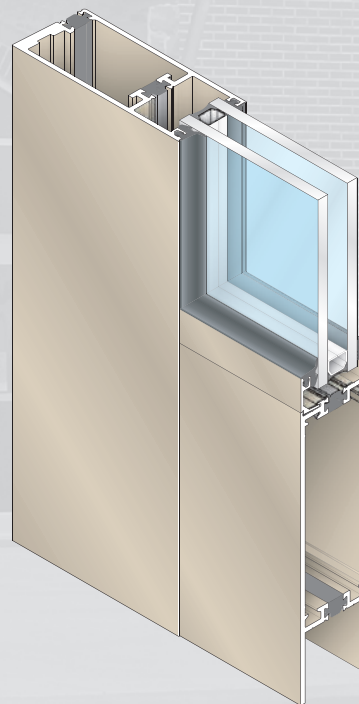


ENTRANCES

THERMAL SERIES 550-T DOOR



- Thermally Broken
- Mechanically Fastened and Welded Corners
- Accommodates a Wide Variety of Custom Hardware
- Wide Stiles
- Accepts 1" (25 mm) Insulating Glass
- Available in an Array of Architectural Coatings and Anodized Finishes



Our Thermal Entrance Doors feature a two glass stop design, filled and debridged with a Polyurethane Polymer thermal break, mechanically fastened and welded corners, and one of the best thermal properties available in a commercial entrance door. These entrances can easily accommodate a wide variety of custom hardware for specific job requirements. 10" (254 mm) bottom rail available to meet A.D.A. requirements.

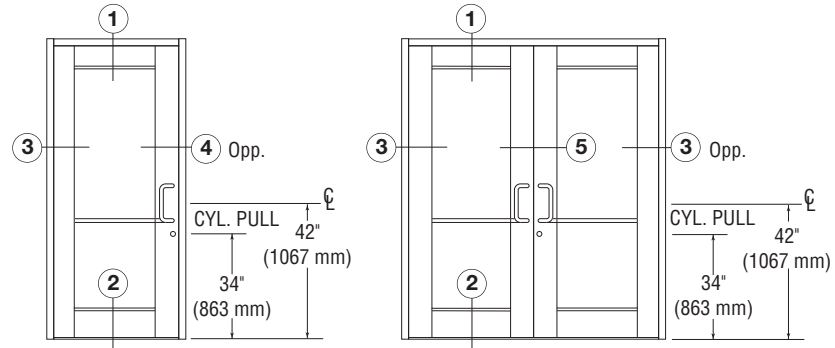
CRL
US ALUMINUM
crlaurence.com • usalum.com
crl-arch.com

Patent No. 6,829,868 B1

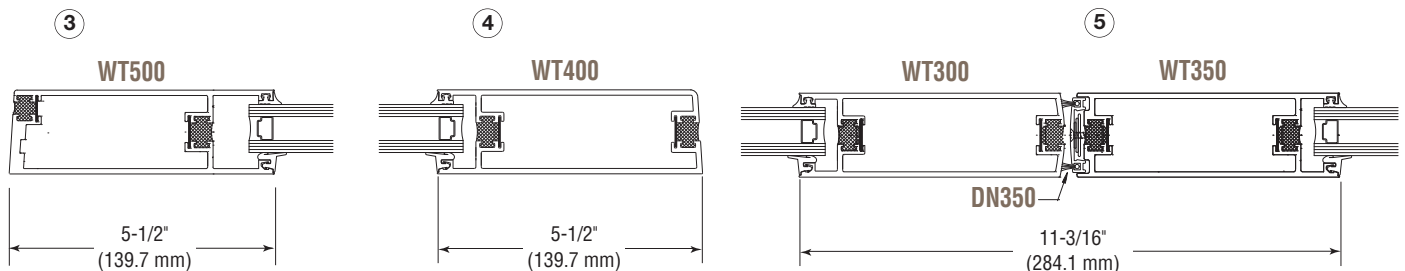
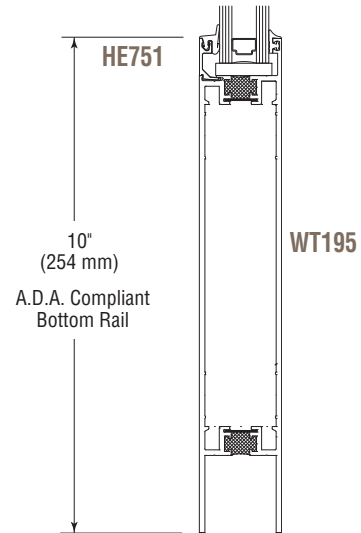
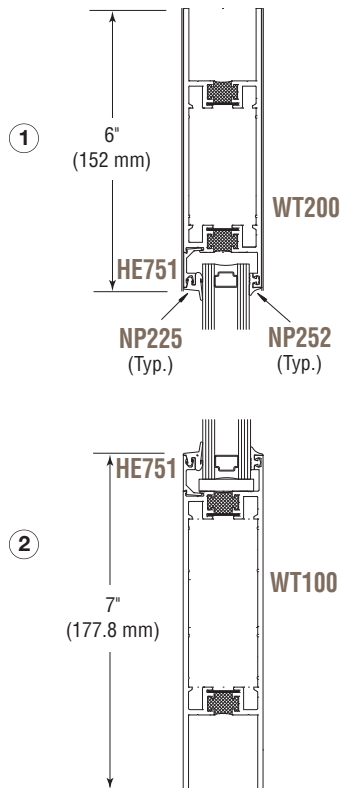
THERMAL SERIES 550-T DOOR

Series 550-T Wide Stile Thermal Entrance Doors

Typical Details



TYPICAL ELEVATIONS



NOT TO SCALE

AVDB4117_550-T_01.14