


U.S. ALUMINUM

SERIES IW3250 STORM WALL

IMPACT RESISTANT CURTAIN WALL SYSTEM

Revisions By:



U.S. ALUMINUM

C.R.LAURENCE CO. ARCHITECTURAL PRODUCTS  
2303 E. Vernon Avenue, Los Angeles, CA 90058-1897  
PH (800)-421-6144 FX 800-587-750 | www.crlaurence.com

Discription:

U.S. ALUMINUM  
SERIES IW3250 STORM WALL  
IMPACT RESISTANT  
CURTAIN WALL SYSTEM

Drawn By: RPD

Date: 03/11/15

Scale: AS NOTED

File Name: IW3250.dwg

Sheet

COVER

SERIES IW3250 STORM WALL SPECIFICATIONS
TECHNICAL DATA:
Strength, versatility and economics make Series IW3250 High Impact Resistant Curtain Wall an Industry standard for low to mid-rise applications where protection from high winds and wind-borne debris is required. Series IW3250 is thermally improved by a continuous thermal spacer interlocked with the horizontal and vertical pressure plates. Dual colors can be achieved by specifying different finishes for the exterior face covers and interior mullions. Two piece horizontals and extruded shear blocks allow for a concealed horizontal to vertical joint. These joint intersections also have concealed injection molded plastic end dams for controlling any infiltrated water.
SPECIAL FEATURES:
<div>* The Series IW3250 Curtain Wall System has been engineered specifically to withstand high winds and wind-borne debris, now required in glass wall systems used in coastal areas. IW3250 requires that impact resistant glass be used, either 7/16" (11) or 1-3/16" (30) laminated glass.</div> <div>* Injection Molded Closure Plates at top and bottom of verticals prevent perimeter seal failure. Easily installed Top and Bottom Anchors facilitate a quick and accurate installation.</div> <div>* Injection Molded End Dams at vertical and horizontal intersections control any infiltrated water</div> <div>* Unlike other Impact Resistant Wall Systems that require structural silicone to hold the glass in place, IW3250 utilizes Gaskets, offering a much faster and more economical installation without sacrificing system integrity.</div> <div>* Extruded aluminum Shear Blocks for tight horizontal to vertical joinery with no exposed screws.</div>

STANDARD ABBREVIATIONS
RO ROUGH OPENING
FD FRAME DIMENSION
DLO DAYLIGHT OPENING
DO DOOR OPENING
DD DOOR DIMENSION
SMC SURFACE MOUNTED CLOSER
OHCC OVERHEAD CONCEALED CLOSER

TABLE OF CONTENTS:		
#	SHEET	DESCRIPTION
1	COVER	TABLE OF CONTENTS / SPECIFICATIONS / SPECIAL FEATURES
2	1.01	CURTAIN WALL SERIES IW 3250 (6 1/4" DEEP SYSTEM) TYPICAL ELEVATIONS
3	1.02	CURTAIN WALL SERIES IW 3250 (6 1/4" DEEP SYSTEM) DETAILS
4	1.03	CURTAIN WALL SERIES IW 3250 (6 1/4" DEEP SYSTEM) DETAILS
5	1.04	CURTAIN WALL SERIES IW 3250 (6 1/4" DEEP SYSTEM) DETAILS
6	1.05	CURTAIN WALL SERIES IW 3250 (6 1/4" DEEP SYSTEM) DETAILS
7	2.01	CURTAIN WALL SERIES IW 3250 (6 1/4" DEEP SYSTEM) TYPICAL DOOR ELEVATIONS
8	2.01A	CURTAIN WALL SERIES IW 3250 (6 1/4" DEEP SYSTEM) TYPICAL DOOR ELEVATIONS
9	2.02	CURTAIN WALL SERIES IW 3250 (6 1/4" DEEP SYSTEM) DETAILS AT DOOR OPENINGS
10	2.02A	CURTAIN WALL SERIES IW 3250 (6 1/4" DEEP SYSTEM) DETAILS AT DOOR OPENINGS
11	3.01	CURTAIN WALL SERIES IW 3250 (7" DEEP SYSTEM) TYPICAL ELEVATIONS
12	3.02	CURTAIN WALL SERIES IW 3250 (7" DEEP SYSTEM) DETAILS
13	3.03	CURTAIN WALL SERIES IW 3250 (7" DEEP SYSTEM) DETAILS
14	3.04	CURTAIN WALL SERIES IW 3250 (7" DEEP SYSTEM) DETAILS
15	3.05	CURTAIN WALL SERIES IW 3250 (7" DEEP SYSTEM) DETAILS
16	4.01	CURTAIN WALL SERIES IW 3250 (7" DEEP SYSTEM) TYPICAL DOOR ELEVATIONS
17	4.01A	CURTAIN WALL SERIES IW 3250 (7" DEEP SYSTEM) TYPICAL DOOR ELEVATIONS
18	4.02	CURTAIN WALL SERIES IW 3250 (7" DEEP SYSTEM) DETAILS AT DOOR OPENINGS
19	4.02A	CURTAIN WALL SERIES IW 3250 (7" DEEP SYSTEM) DETAILS AT DOOR OPENINGS
20	4.03	CURTAIN WALL SERIES IW 3250 (7" DEEP SYSTEM) DETAILS AT DOOR OPENINGS
21	4.03A	CURTAIN WALL SERIES IW 3250 (7" DEEP SYSTEM) DETAILS AT DOOR OPENINGS

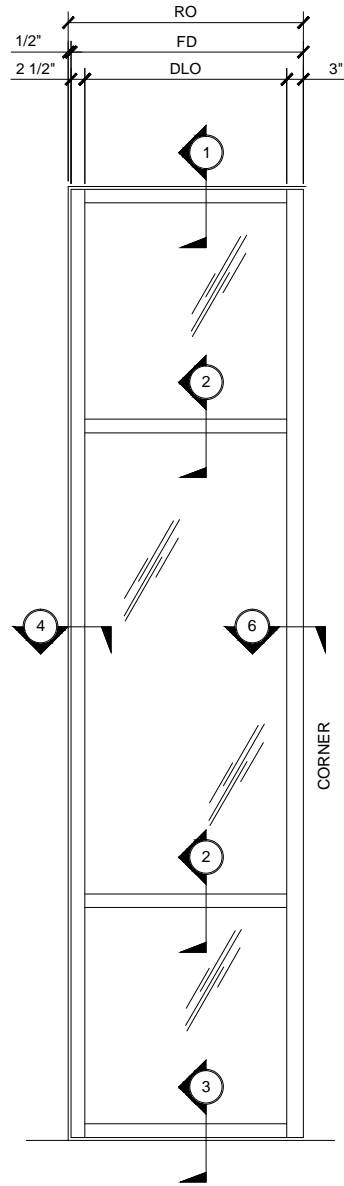
SERIES	WIDTH	OVERALL DEPTH	GLAZING INFILL	APPLICATIONS
IW3250	2-1/2" (63.5)	6-1/4" (158.8)	7/16" (11)	Low-Rise to Mid-Rise Buildings Where Impact Resistant Specifications are Required
		7" (177.8)	1-3/16" (30)	



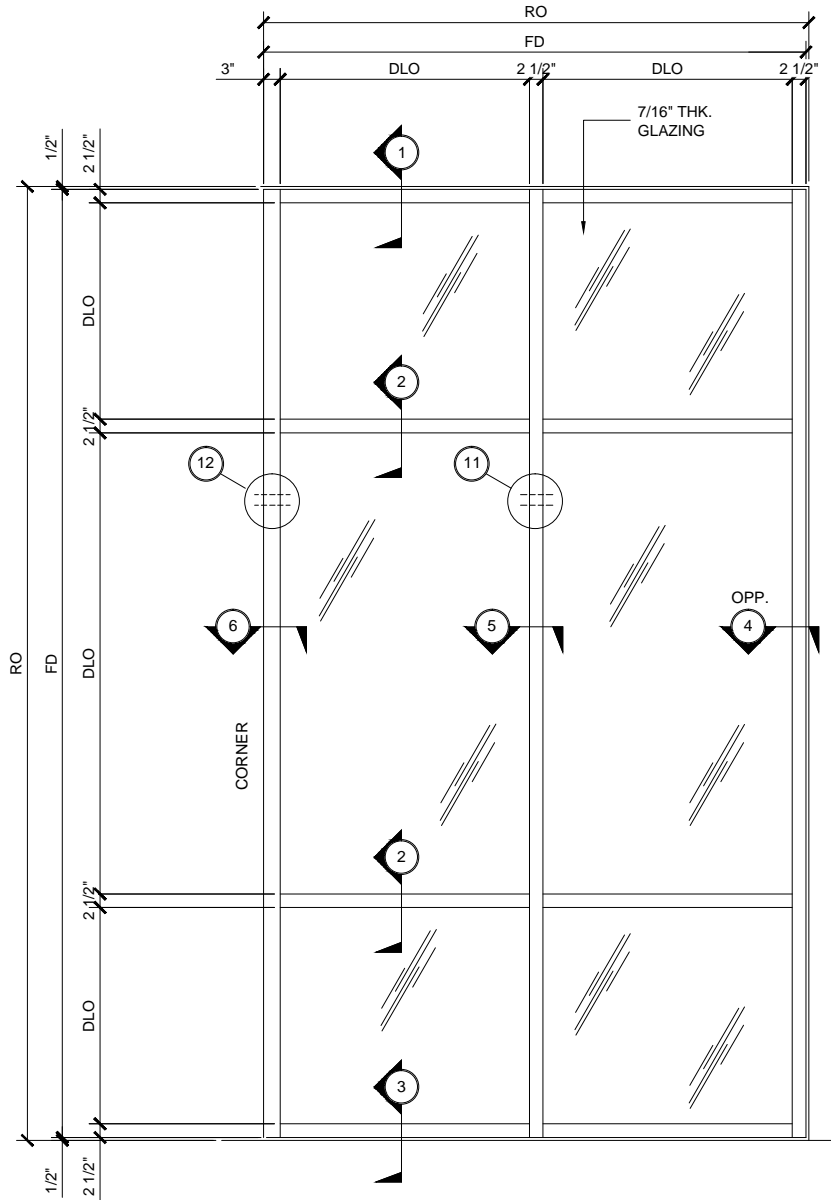
Discription:

U.S. ALUMINUM  
SERIES IW3250 STORM WALL  
IMPACT RESISTANT  
CURTAIN WALL SYSTEM

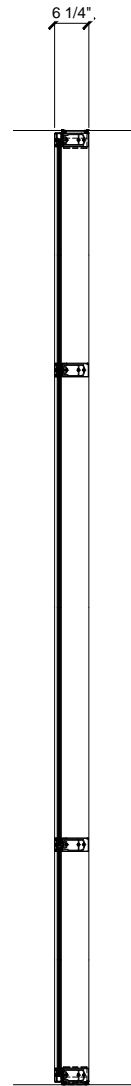
Drawn By: RPD  
Date: 03/11/15  
Scale: AS NOTED  
File Name: IW3250.dwg  
Sheet



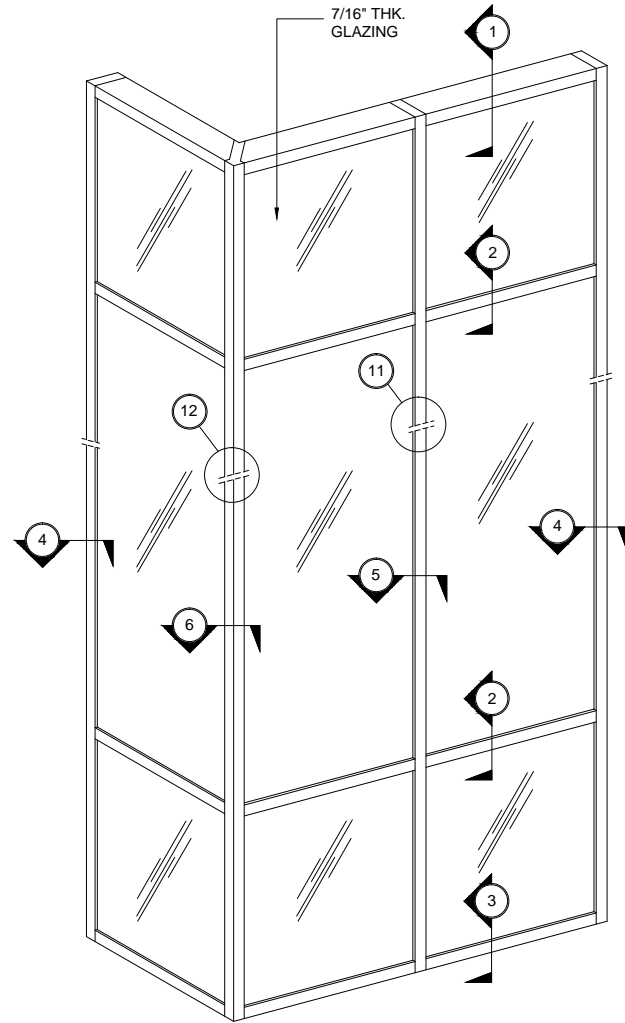
ELEVATION  
3/4" = 1'-0"



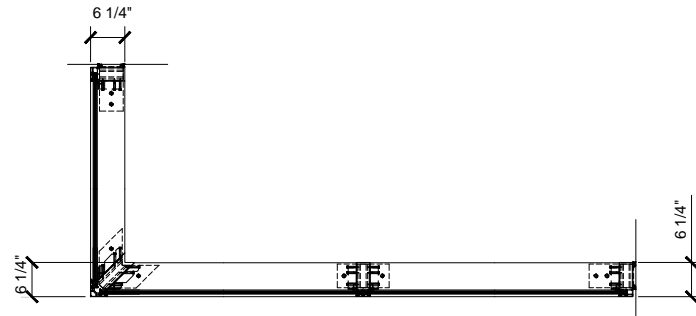
TYPICAL CURTAIN WALL ELEVATION  
7/16" THICK SINGLE GLAZED  
6 1/4" DEEP SYSTEM  
5" BACK MEMBER  
3/4" = 1'-0"



SECTION  
3/4" = 1'-0"

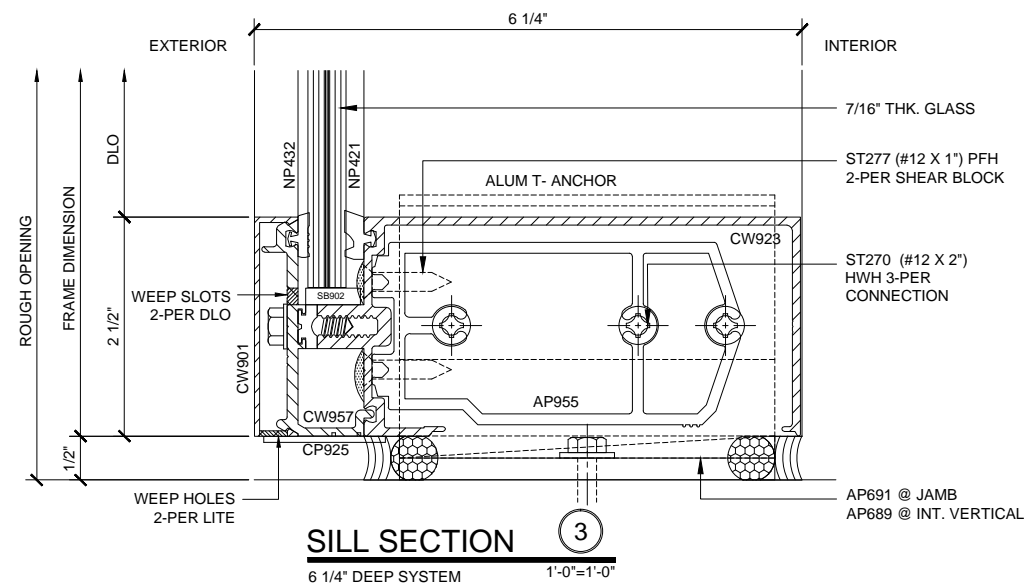
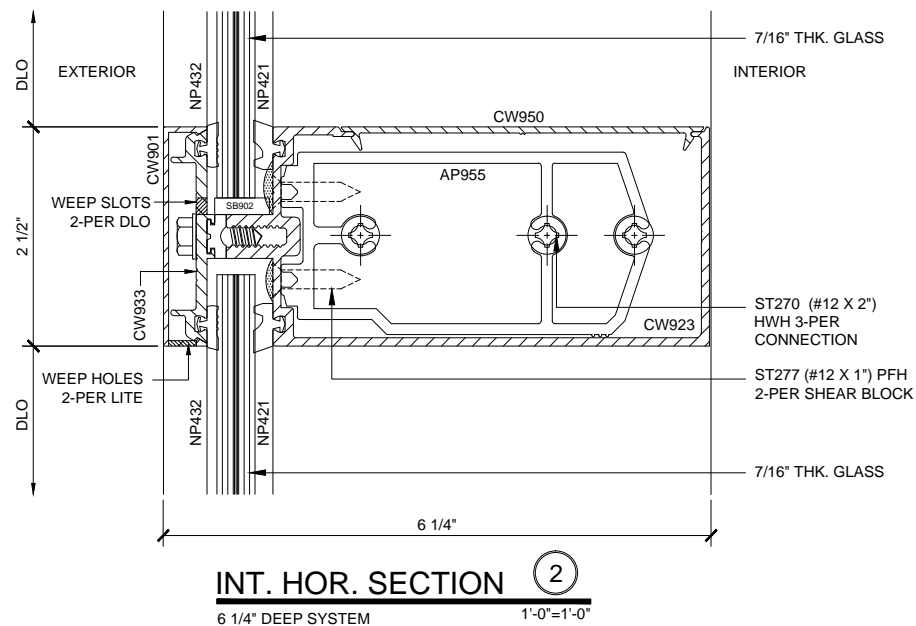
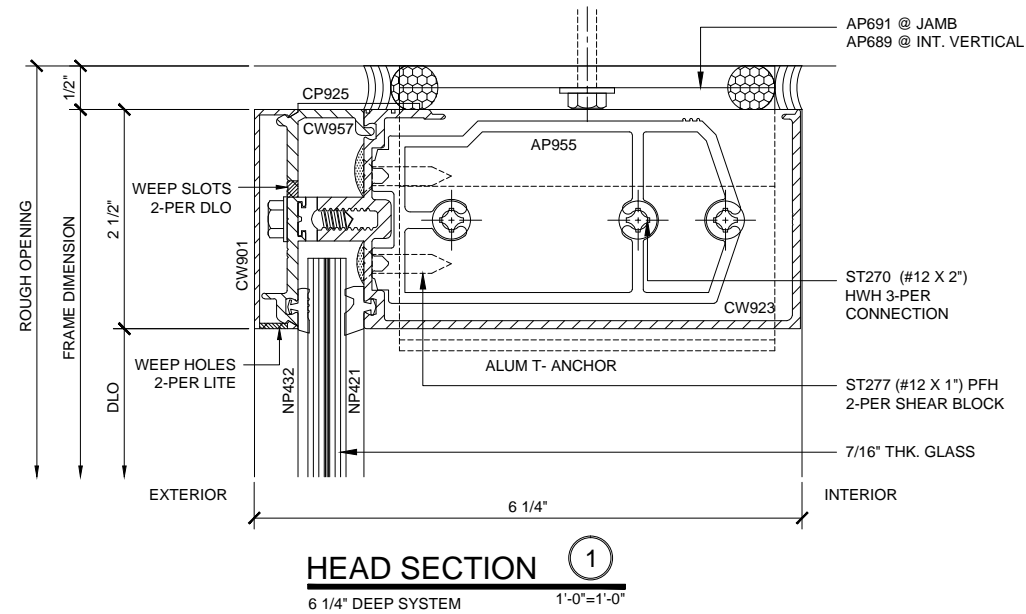


TYPICAL IW3250 STORM WALL ELEVATION  
7/16" THICK SINGLE GLAZED  
6 1/4" DEEP SYSTEM  
5" BACK MEMBER  
SCALE: 3/4" = 1'-0"

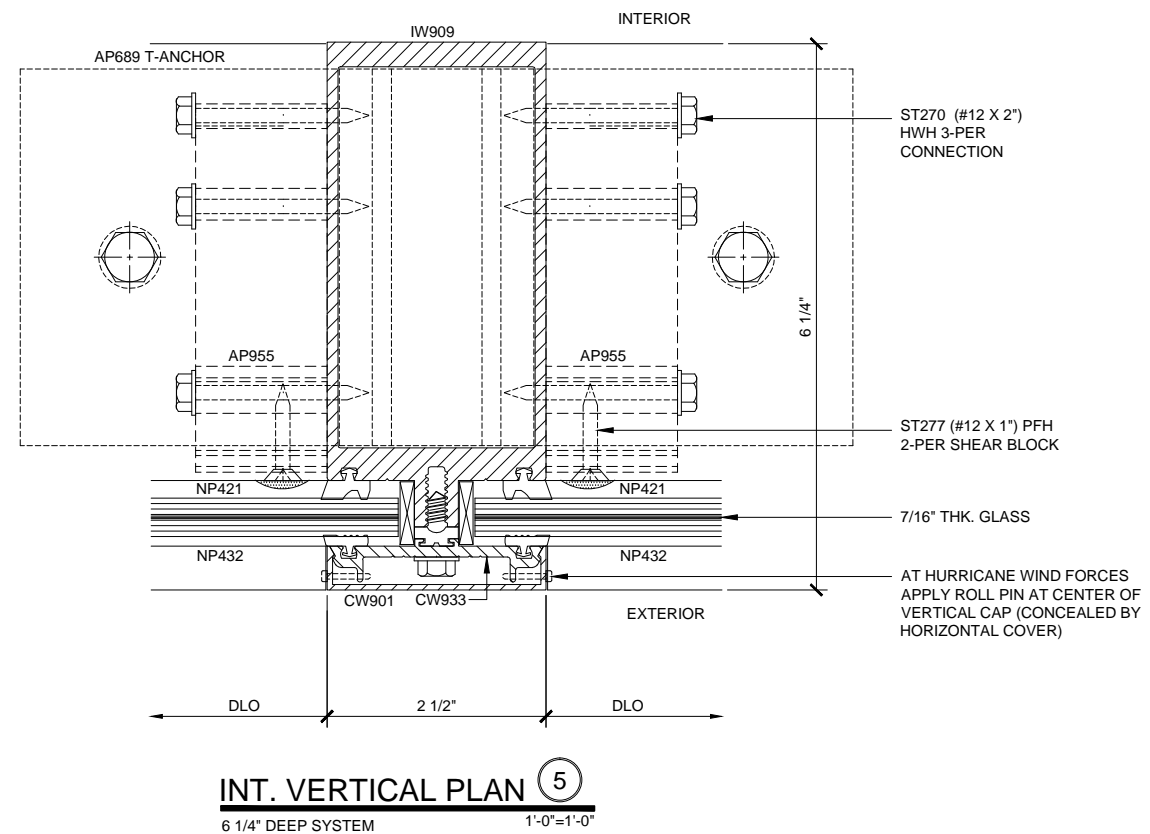
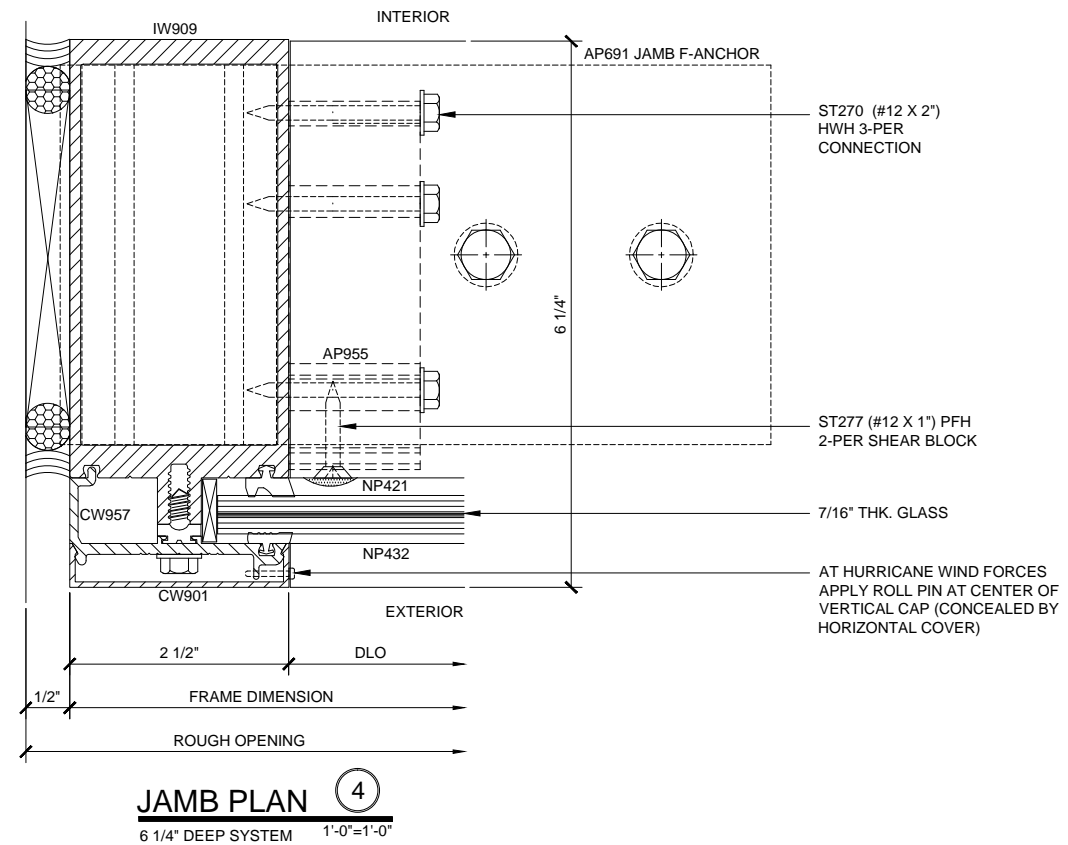


TYPICAL CURTAIN WALL PLAN  
7/16" THICK SINGLE GLAZED  
6 1/4" DEEP SYSTEM  
5" BACK MEMBER  
3/4" = 1'-0"

CURTAIN WALL SERIES IW3250 TYPICAL ELEVATIONS  
6 1/4" DEEP SYSTEM



## U.S. ALUMINUM SERIES IW3250 STORM WALL IMPACT RESISTANT CURTAIN WALL SYSTEM



## CURTAIN WALL SERIES IW3250 6 1/4" DEEP SYSTEM DETAILS

Revisions By:

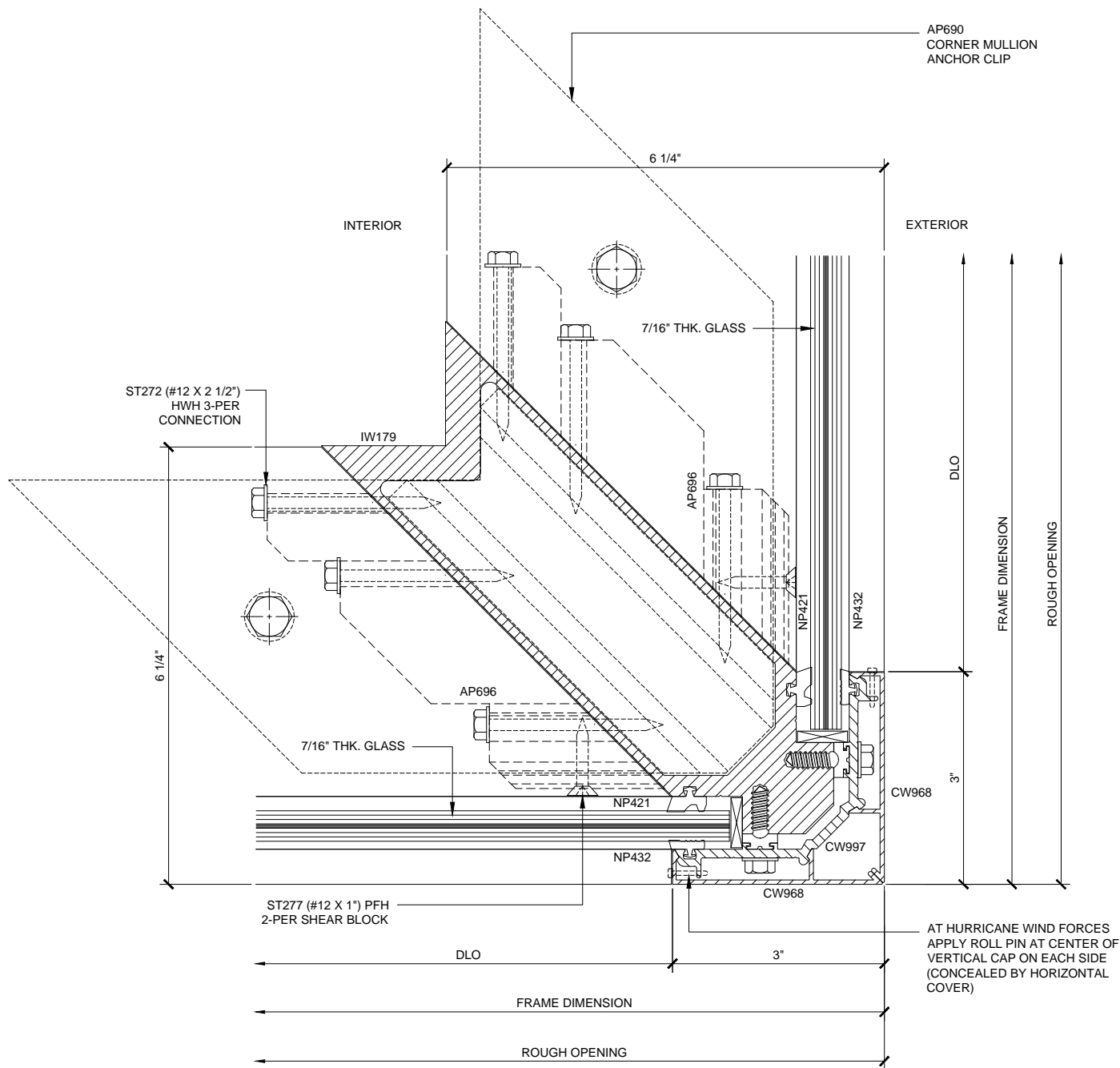


C.R. LAURENCE CO. ARCHITECTURAL PRODUCTS  
2303 E. Vernon Avenue, Los Angeles, CA 90058-1897  
PH (800) 421-6144 FX 800-587-7501 www.crlaurence.com

Discription:  
U.S. ALUMINUM  
SERIES IW3250 STORM WALL  
IMPACT RESISTANT  
CURTAIN WALL SYSTEM

Drawn By: RPD  
Date: 03/11/15  
Scale: AS NOTED  
File Name: IW3250.dwg  
Sheet

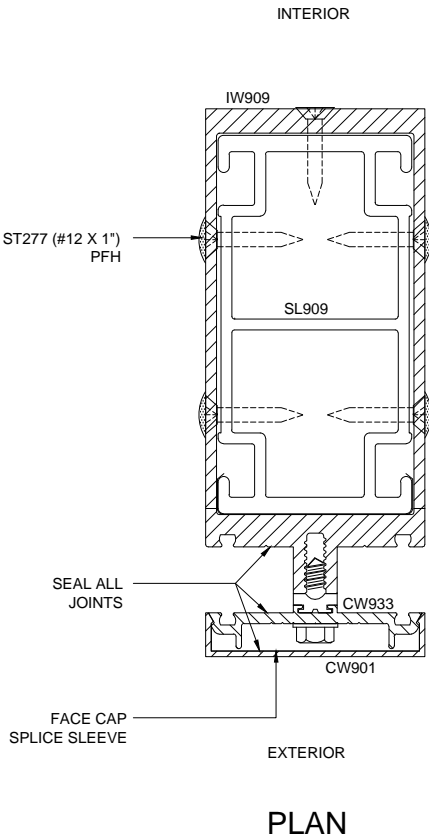
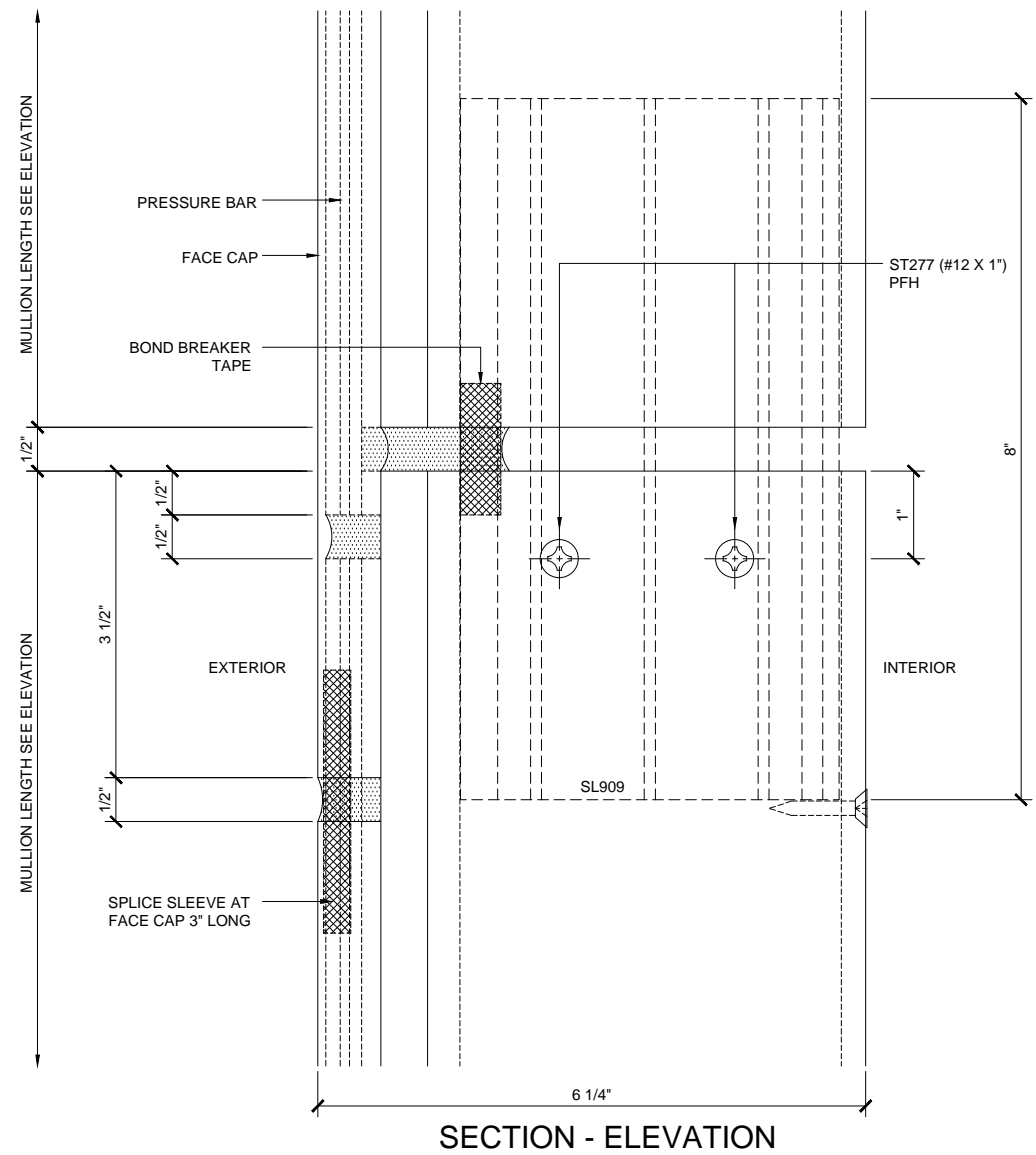
U.S. ALUMINUM SERIES IW3250 STORM WALL IMPACT RESISTANT CURTAIN WALL SYSTEM



CORNER VERTICAL PLAN 6  
6 1/4" DEEP SYSTEM 1'-0"=1'-0"

CURTAIN WALL SERIES IW3250 6 1/4" DEEP SYSTEM DETAILS

Revisions By:	
C.R. LAURENCE CO. ARCHITECTURAL PRODUCTS 2503 E. Vernon Avenue, Los Angeles, CA 90058-1897 PH: (800) 421-6144 FX: 800-587-7501 www.crlaurence.com	
Description: U.S. ALUMINUM SERIES IW3250 STORM WALL IMPACT RESISTANT CURTAIN WALL SYSTEM	
Drawn By:	RPD
Date:	03/11/15
Scale:	AS NOTED
File Name:	IW3250.dwg
Sheet	
1.03	



VERTICAL SPLICE DETAILS 11  
6 1/4" DEEP SYSTEM 1'-0"=1'-0"

CURTAIN WALL SERIES IW3250 6 1/4" DEEP SYSTEM DETAILS

Revisions By:

CAL

U.S. ALUMINUM

C.R. LAURENCE CO. ARCHITECTURAL PRODUCTS  
2303 E. Vernon Avenue, Los Angeles, CA 90058-1897  
PH: (800)-421-6144 FX: 800-587-7501 www.crlaurence.com

Discription:  
U.S. ALUMINUM  
SERIES IW3250 STORM WALL  
IMPACT RESISTANT  
CURTAIN WALL SYSTEM

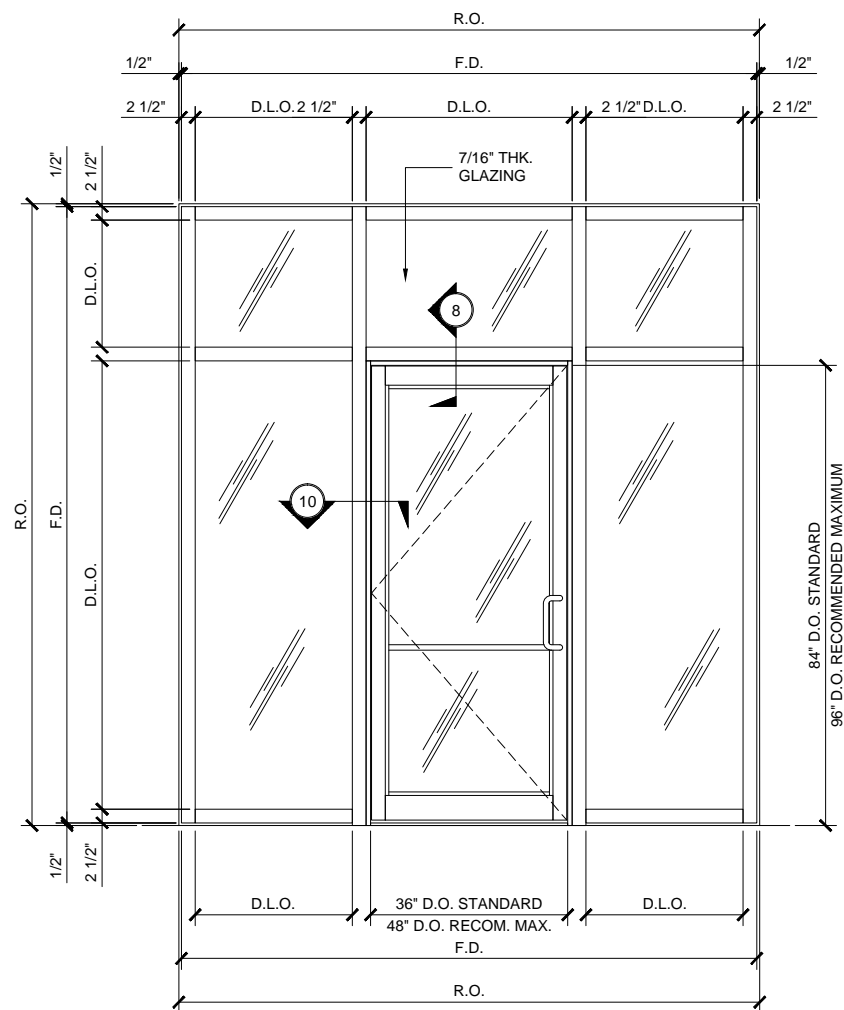
Drawn By: RPD  
Date: 03/11/15  
Scale: AS NOTED  
File Name: IW3250.dwg  
Sheet  
1.04

Revisions By:

Description:

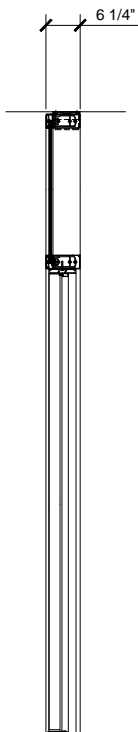
U.S. ALUMINUM  
SERIES IW3250 STORM WALL  
IMPACT RESISTANT  
CURTAIN WALL SYSTEM

Drawn By:	RPD
Date:	03/11/15
Scale:	AS NOTED
File Name:	IW3250.dwg
Sheet	

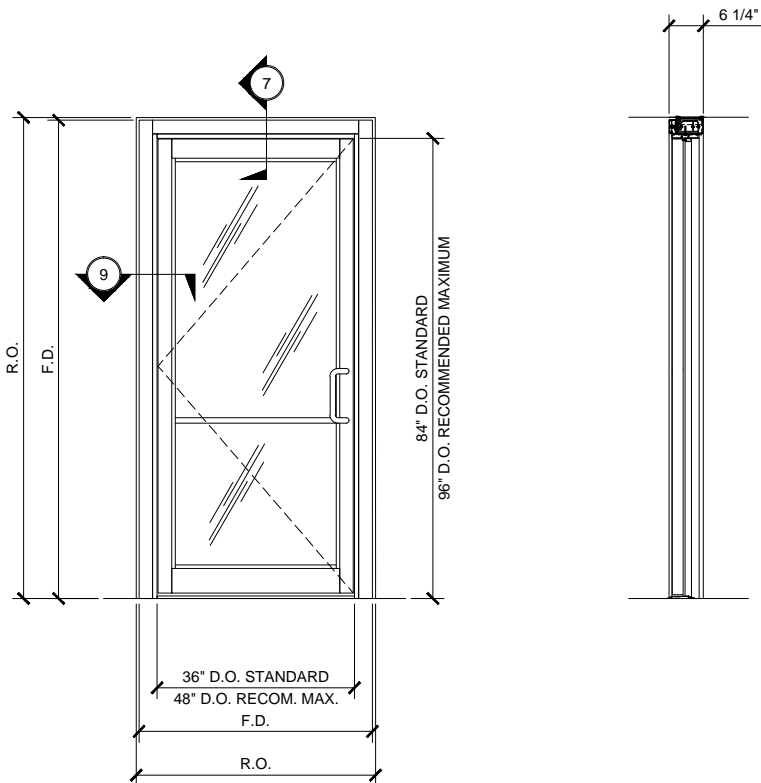


## TYPICAL OH DOOR FRAMING ELEVATION

6 1/4" DEEP SYSTEM (WITH SIDE LITES) SCALE: 3/4" = 1'-0"

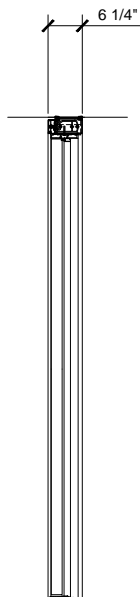


## SECTION

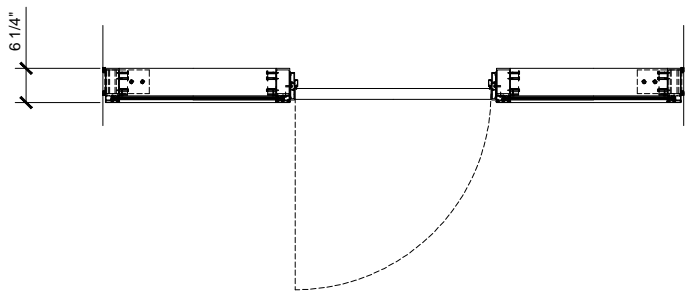
$$\frac{3}{4}'' = 1'-0''$$


## TYPICAL OH DOOR FRAMING ELEVATION

6 1/4" DEEP SYSTEM SCALE: 3/4" = 1'-0"

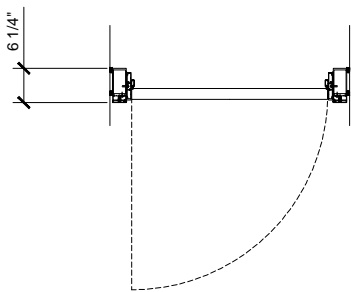


## SECTION

$$3/4'' = 1'-0''$$


## TYPICAL OH DOOR FRAMING PLAN

6 1/4" DEEP SYSTEM (WITH SIDE LITES) SCALE: 3/4" = 1'-0"



## TYPICAL OH DOOR FRAMING PLAN

6 1/4" DEEP SYSTEM SCALE: 3/4" = 1'-0"

## CURTAIN WALL SERIES IW3250 TYPICAL DOOR ELEVATIONS

## 6 1/4" DEEP SYSTEM

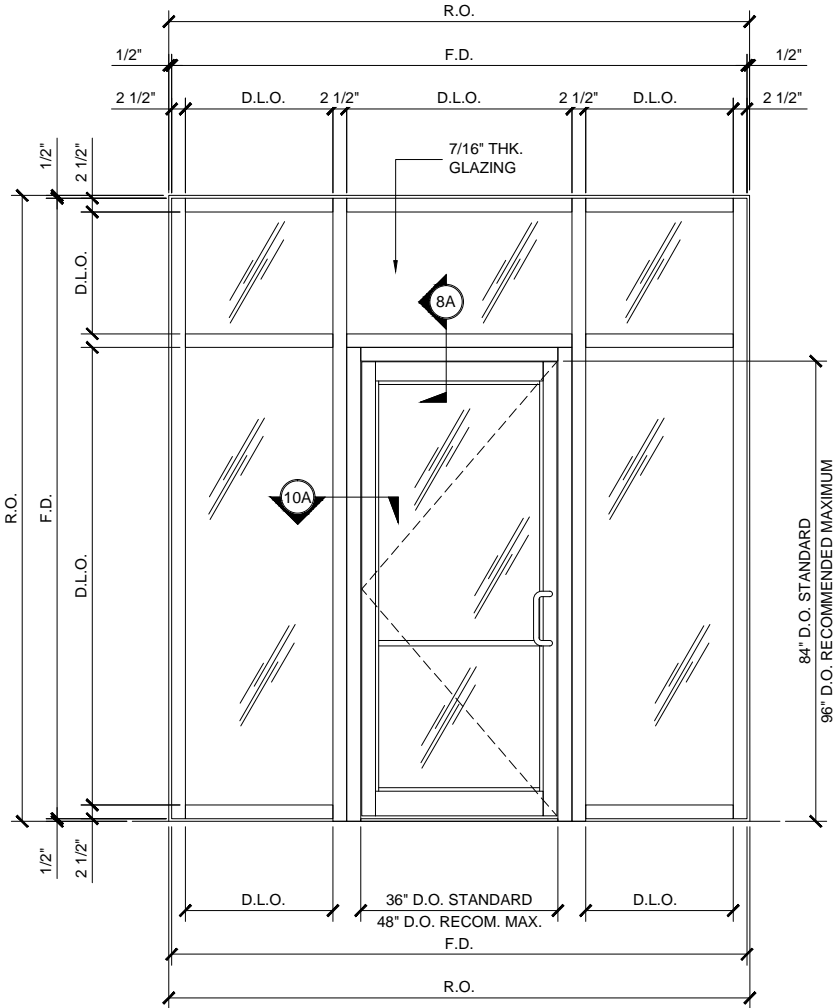
**CEAL**  
**THE ALUMINUM**

C.R. LAURENCE CO. ARCHITECTURAL PRODUCTS  
2503 E. Vermont Avenue, Los Angeles, CA 90058-1897  
PH (800) 421-6114 FX 800-587-7501 [www.claluminum.com](http://www.claluminum.com)

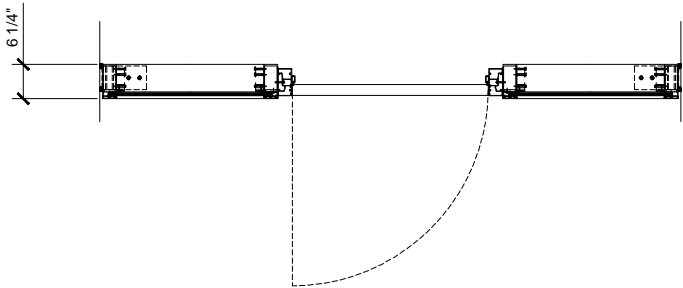
Description:  
U.S. ALUMINUM  
SERIES IW3250 STORM WALL  
IMPACT RESISTANT  
CURTAIN WALL SYSTEM

Drawn By:	RPD
Date:	03/11/15
Scale:	AS NOTED
File Name:	IW3250.dwg

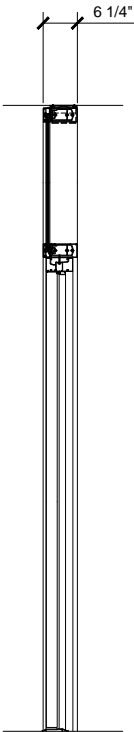
Sheet



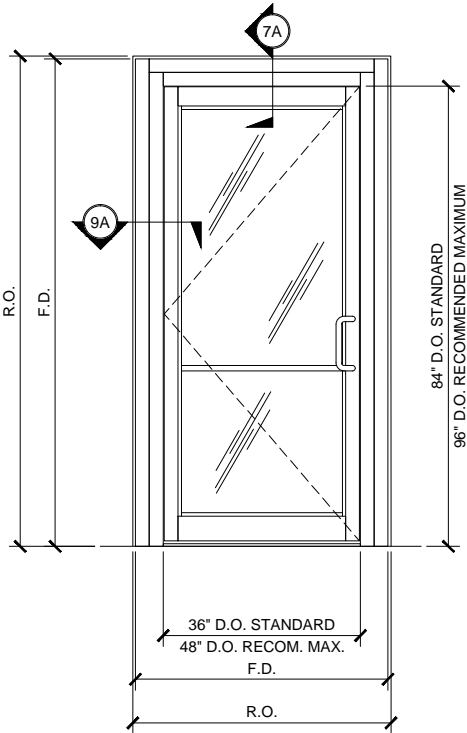
TYPICAL OH DOOR FRAMING ELEVATION  
6 1/4" DEEP SYSTEM (WITH SIDE LITES)  
(ALTERNATE ELEVATION) SCALE: 3/4" = 1'-0"



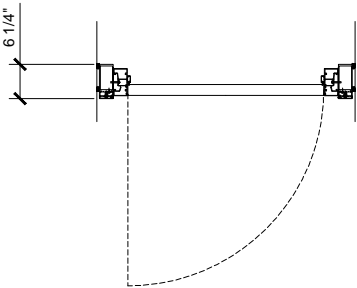
TYPICAL OH DOOR FRAMING PLAN  
6 1/4" DEEP SYSTEM (WITH SIDE LITES)  
(ALTERNATE PLAN) SCALE: 3/4" = 1'-0"



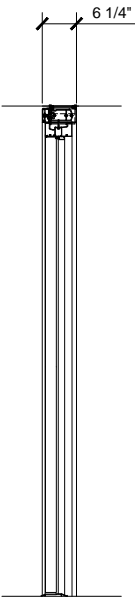
SECTION  
3/4" = 1'-0"



TYPICAL OH DOOR FRAMING ELEVATION  
6 1/4" DEEP SYSTEM  
(ALTERNATE ELEVATION) SCALE: 3/4" = 1'-0"



TYPICAL OH DOOR FRAMING PLAN  
6 1/4" DEEP SYSTEM  
(ALTERNATE PLAN) SCALE: 3/4" = 1'-0"



SECTION  
3/4" = 1'-0"

CURTAIN WALL SERIES IW3250 TYPICAL DOOR ELEVATIONS  
6 1/4" DEEP SYSTEM (ALTERNATE PLANS & ELEVATIONS)

Revisions By:

E.R.L.

ALUMINUM

C.R.LAURENCE CO. ARCHITECTURAL PRODUCTS  
2303 E. Vernon Avenue, Los Angeles, CA 90058-1897  
PH (800) 421-6144 FX 800-587-7501 www.crlaurence.com

Discription:  
U.S. ALUMINUM  
SERIES IW3250 STORM WALL  
IMPACT RESISTANT  
CURTAIN WALL SYSTEM

Drawn By: RPD  
Date: 03/11/15  
Scale: AS NOTED  
File Name: IW3250.dwg  
Sheet

2.01A



U.S. ALUMINUM SERIES IW3250 STORM WALL IMPACT RESISTANT CURTAIN WALL SYSTEM

Revisions By:

CAL

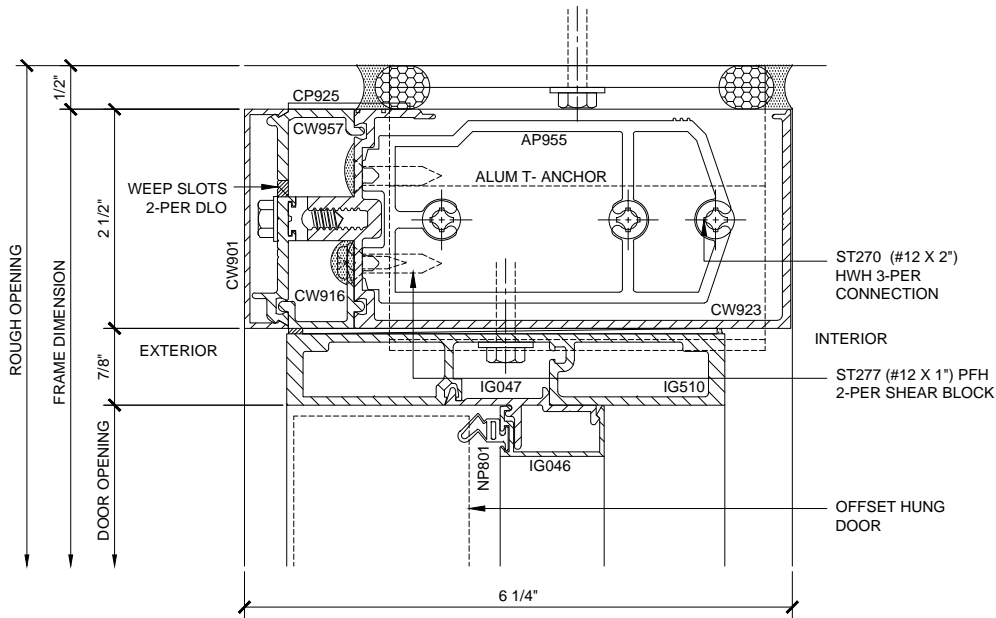
U.S. ALUMINUM

C.R. LAURENCE CO. ARCHITECTURAL PRODUCTS  
2303 E. Vernon Avenue, Los Angeles, CA 90058-1897  
PH (800) 421-6144 FX 800-587-7501 www.crlaurence.com

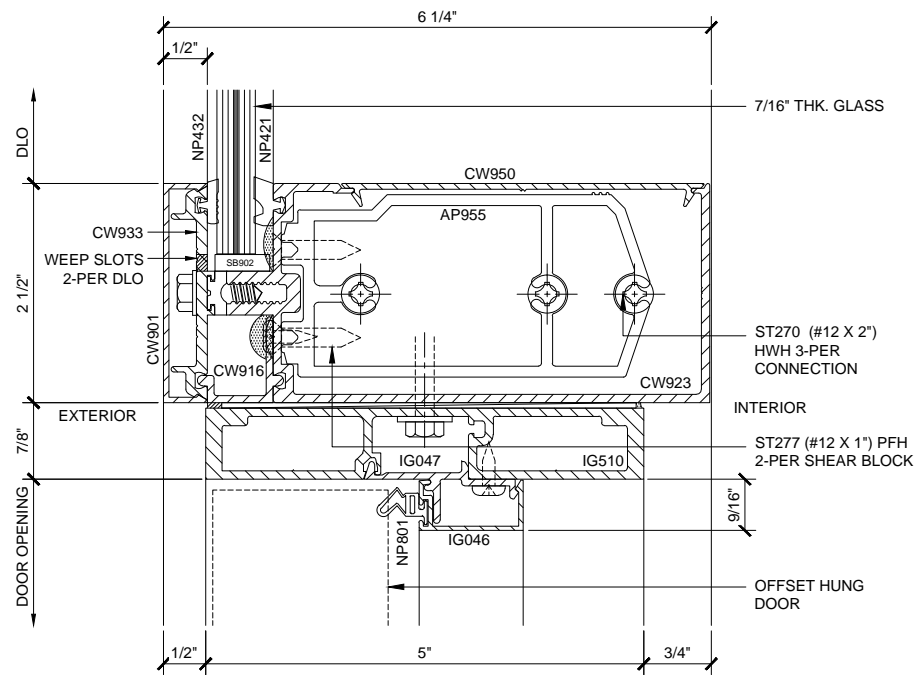
Discription:  
U.S. ALUMINUM  
SERIES IW3250 STORM WALL  
IMPACT RESISTANT  
CURTAIN WALL SYSTEM

Drawn By: RPD  
Date: 03/11/15  
Scale: AS NOTED  
File Name: IW3250.dwg  
Sheet

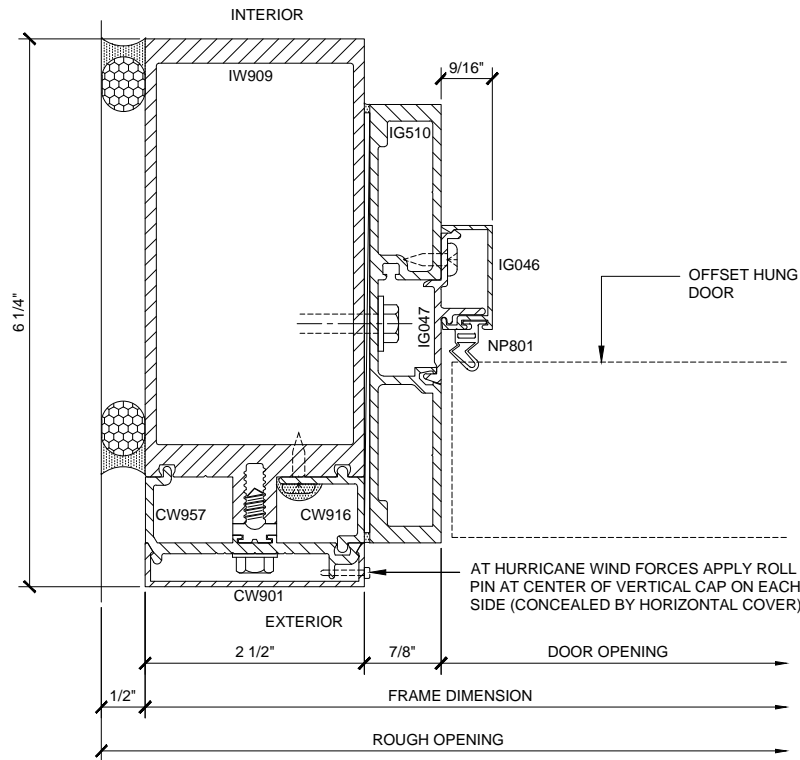
2.02



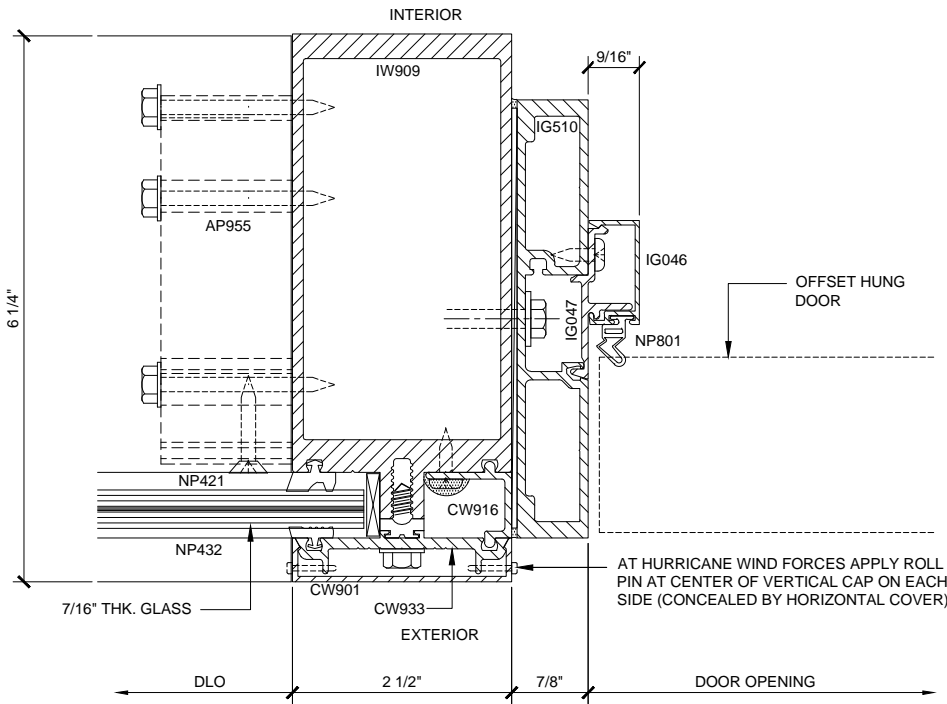
OH HEAD SECTION 7  
6 1/4" DEEP SYSTEM 1'-0"=1'-0"



OH TRANSOM SECTION 8  
6 1/4" DEEP SYSTEM 1'-0"=1'-0"



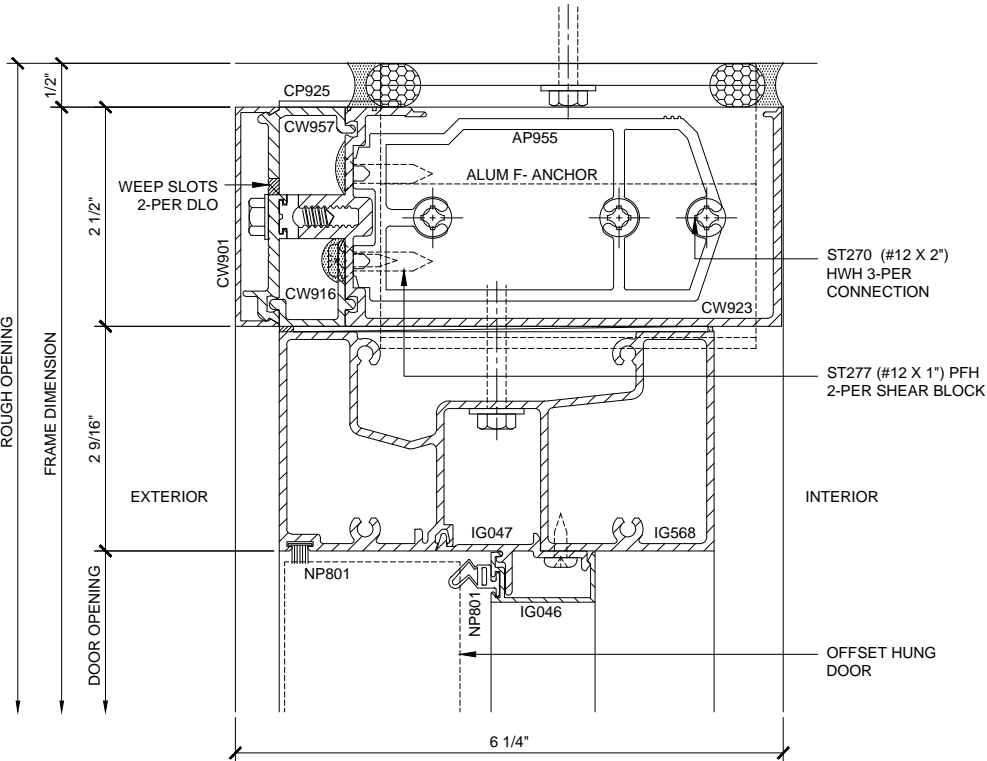
DOOR JAMB SECTION 9  
6 1/4" DEEP SYSTEM 1'-0"=1'-0"



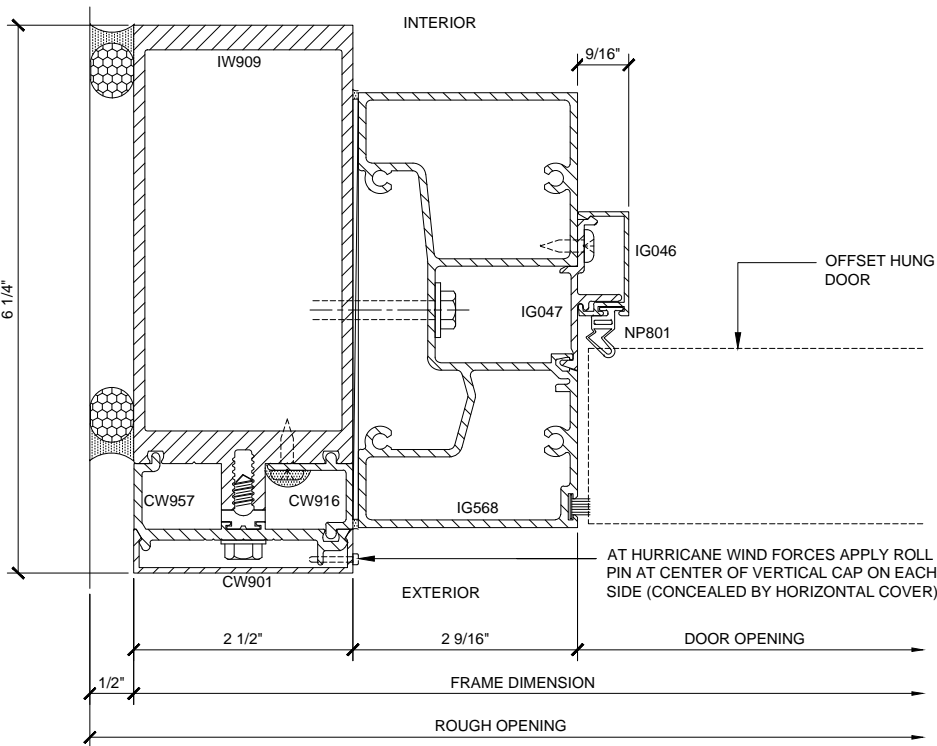
SIDELITE / DOOR JAMB SECTION 10  
6 1/4" DEEP SYSTEM 1'-0"=1'-0"

CURTAIN WALL SERIES IW3250 6 1/4" DEEP SYSTEM DETAILS

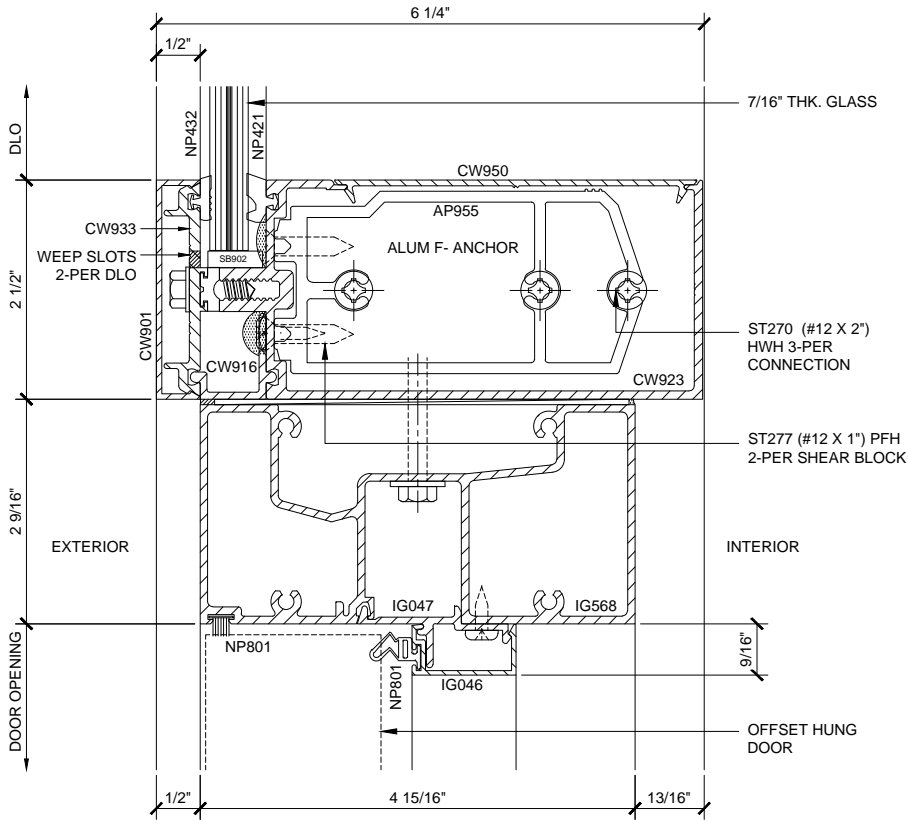
U.S. ALUMINUM SERIES IW3250 STORM WALL IMPACT RESISTANT CURTAIN WALL SYSTEM



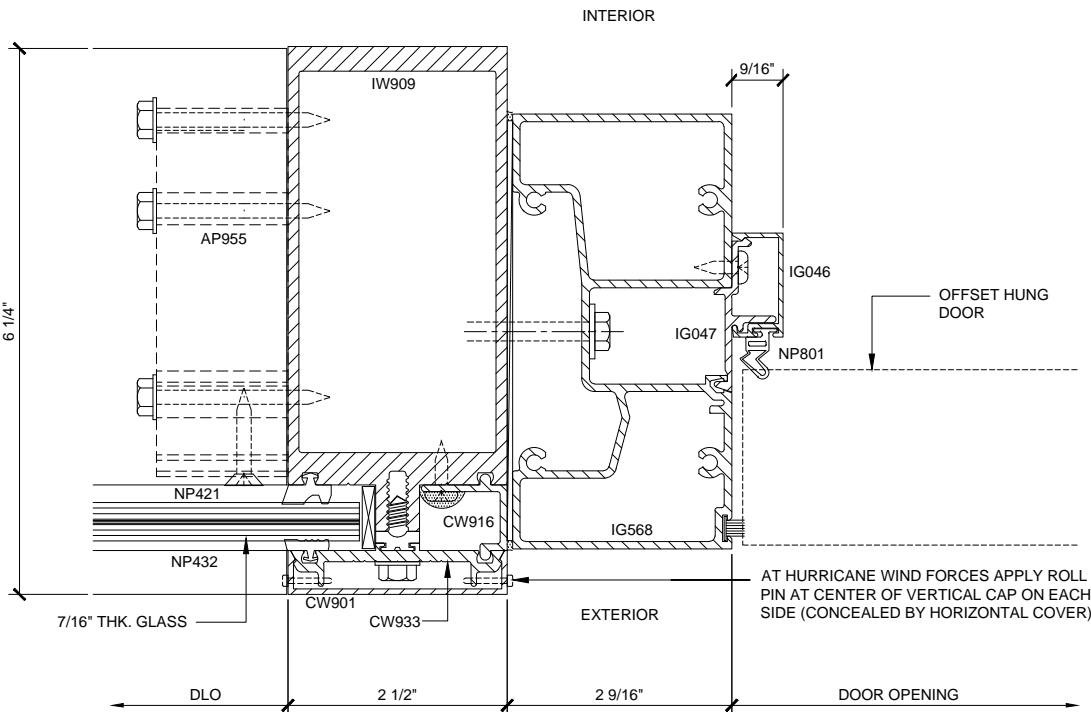
OH HEAD SECTION 7A  
6 1/4" DEEP SYSTEM 1'-0"=1'-0"



DOOR JAMB SECTION 9A  
6 1/4" DEEP SYSTEM 1'-0"=1'-0"



OH TRANSOM SECTION 8A  
6 1/4" DEEP SYSTEM 1'-0"=1'-0"



SIDELITE / DOOR JAMB SECTION 10A  
6 1/4" DEEP SYSTEM 1'-0"=1'-0"

CURTAIN WALL SERIES IW3250 6 1/4" DEEP SYSTEM DETAILS

Revisions By:

CAL


U.S. ALUMINUM

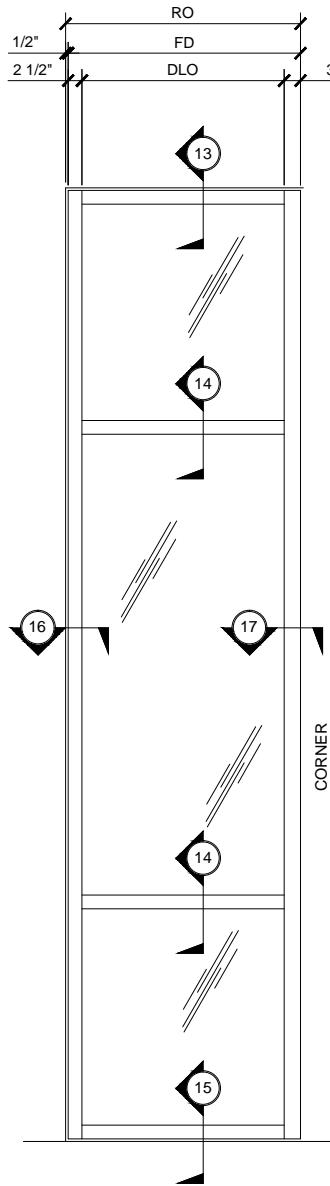
C.R. LAURENCE CO. ARCHITECTURAL PRODUCTS  
2303 E. Vernon Avenue, Los Angeles, CA 90058-1897  
PH (800) 421-6144 FX 800-587-7501 www.crlaurence.com

Discription:  
U.S. ALUMINUM  
SERIES IW3250 STORM WALL  
IMPACT RESISTANT  
CURTAIN WALL SYSTEM

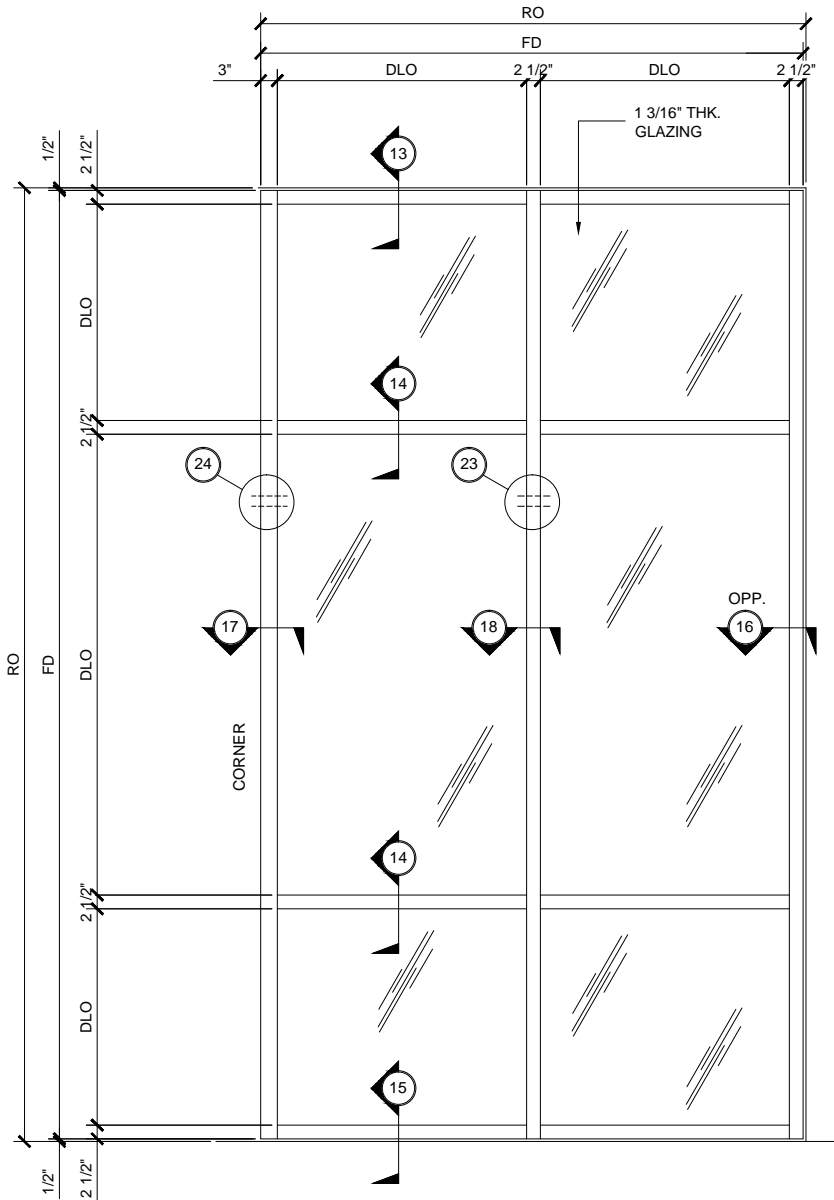
Drawn By: RPD  
Date: 03/11/15  
Scale: AS NOTED  
File Name: IW3250.dwg  
Sheet

2.02A

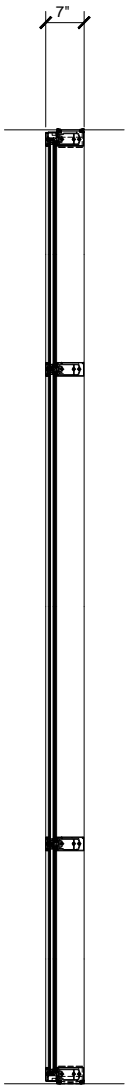
Revisions By:	
<div></div> <div>C.R.LAURENCE CO. ARCHITECTURAL PRODUCTS 2303 E. Vernon Avenue, Los Angeles, CA 90058-1897 PH (800) 421-6144 FX 800-587-7501 www.crlaurence.com</div>	
Description: U.S. ALUMINUM SERIES IW3250 STORM WALL IMPACT RESISTANT CURTAIN WALL SYSTEM	
Drawn By: RPD	
Date: 03/11/15	
Scale: AS NOTED	
File Name: IW3250.dwg	
Sheet	
3.01	



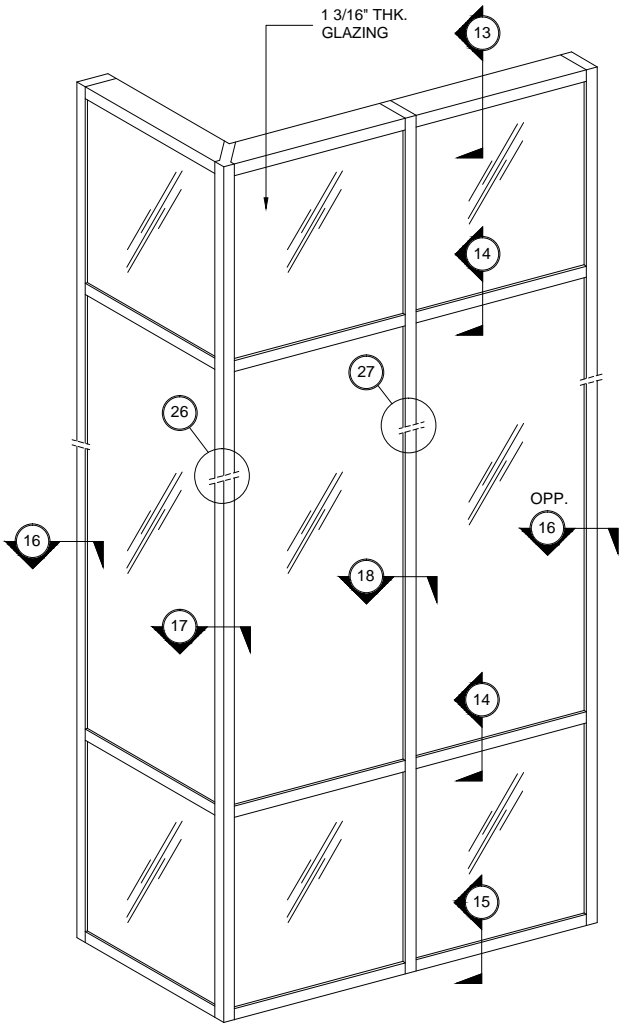
ELEVATION  
3/4" = 1'-0"



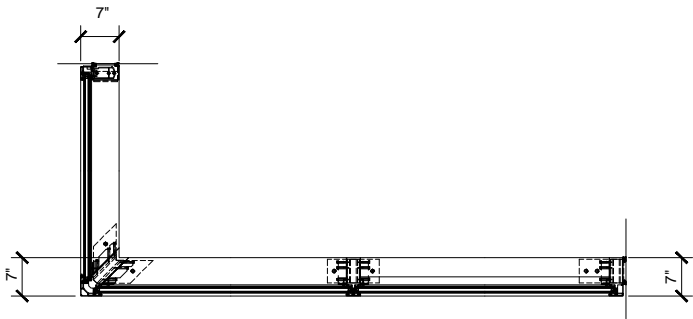
TYPICAL CURTAIN WALL ELEVATION  
1 3/16" THICK DOUBLE GLAZED  
7" DEEP SYSTEM  
5" BACK MEMBER  
3/4" = 1'-0"



SECTION  
3/4" = 1'-0"

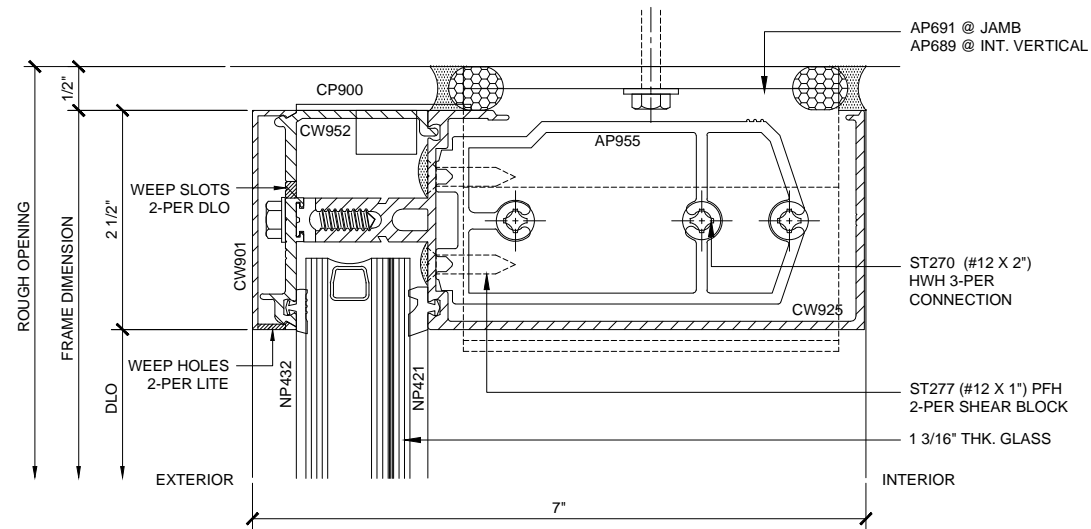


TYPICAL IW3250 STORM WALL ELEVATION  
1 3/16" THICK DOUBLE GLAZED  
7" DEEP SYSTEM  
5" BACK MEMBER  
SCALE: 3/4" = 1'-0"

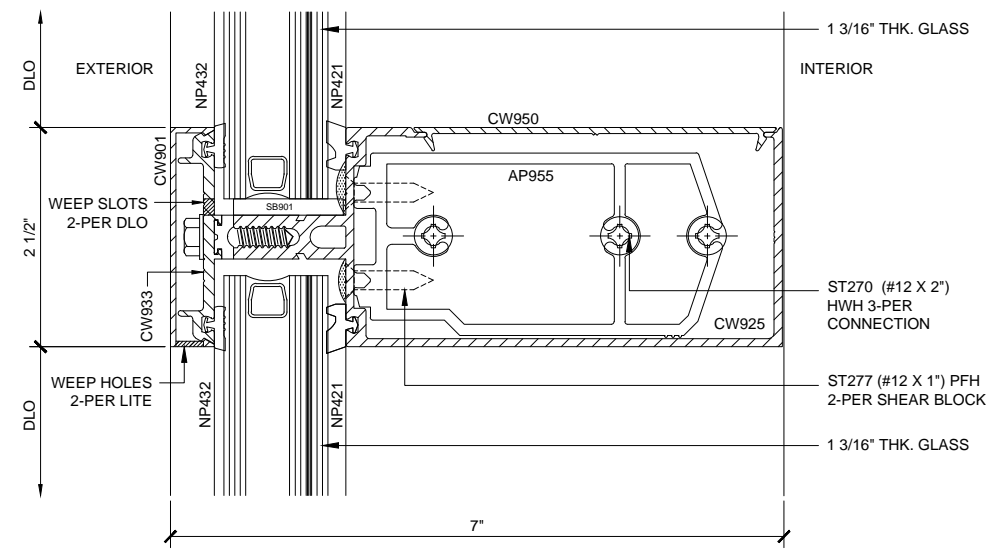


TYPICAL CURTAIN WALL PLAN  
1 3/16" THICK DOUBLE GLAZED  
7" DEEP SYSTEM  
5" BACK MEMBER  
3/4" = 1'-0"

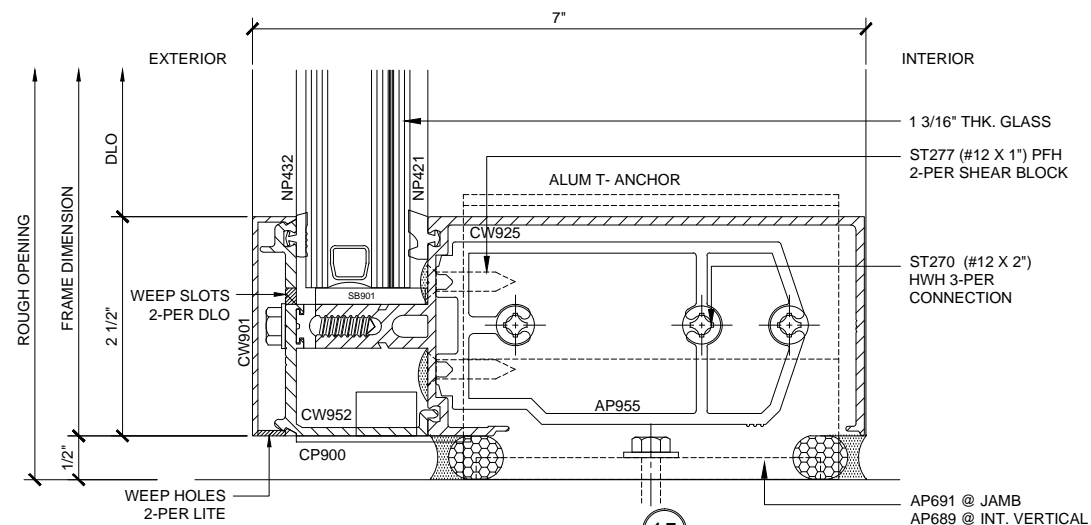
CURTAIN WALL SERIES IW3250 TYPICAL ELEVATIONS  
7" DEEP SYSTEM



**HEAD SECTION 13**  
7" DEEP SYSTEM 1'-0"=1'-0"

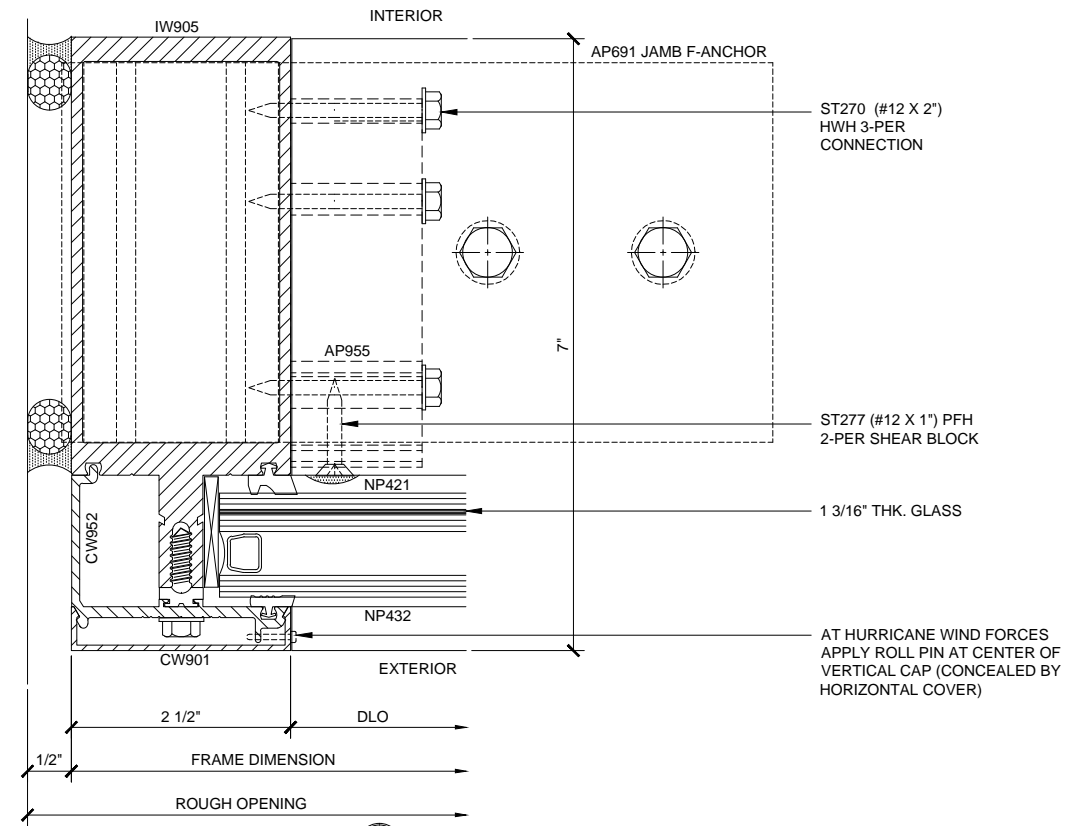


**INT. HOR. SECTION 14**  
7" DEEP SYSTEM 1'-0"=1'-0"

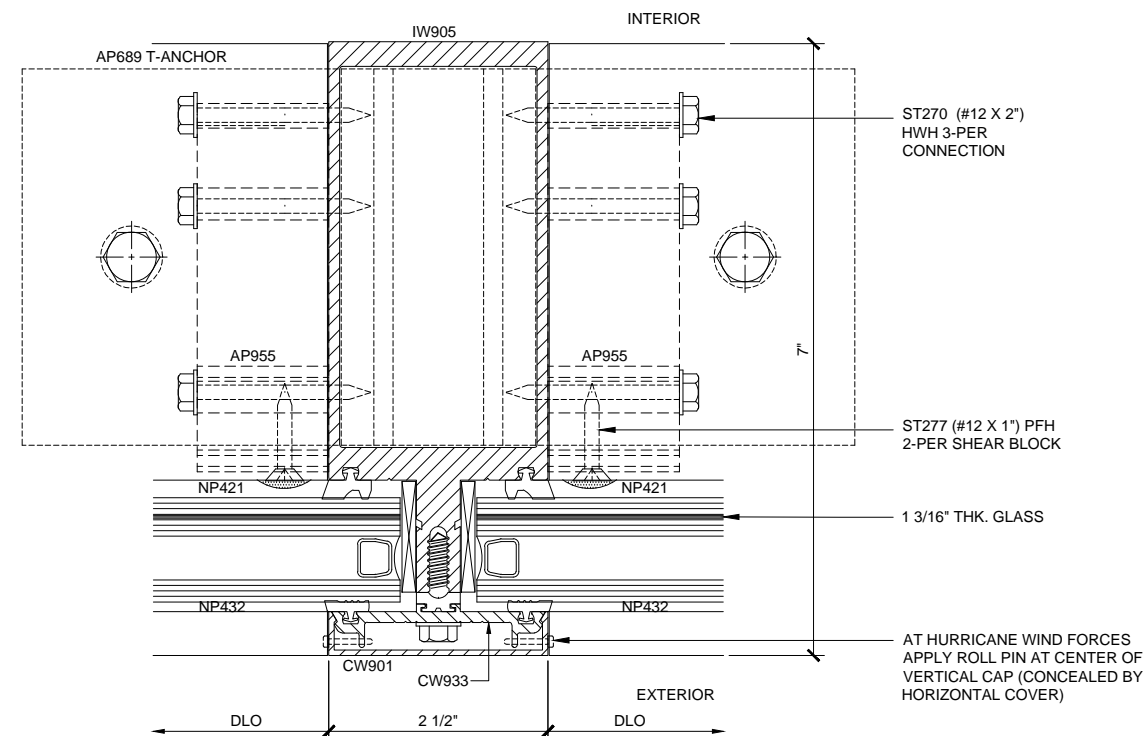


**SILL SECTION 15**  
7" DEEP SYSTEM 1'-0"=1'-0"

## U.S. ALUMINUM SERIES IW3250 STORM WALL IMPACT RESISTANT CURTAIN WALL SYSTEM



**JAMB PLAN 16**  
7" DEEP SYSTEM 1'-0"=1'-0"



**INT. VERTICAL PLAN 17**  
7" DEEP SYSTEM 1'-0"=1'-0"

## CURTAIN WALL SERIES IW3250 7" DEEP SYSTEM DETAILS

Revisions By:

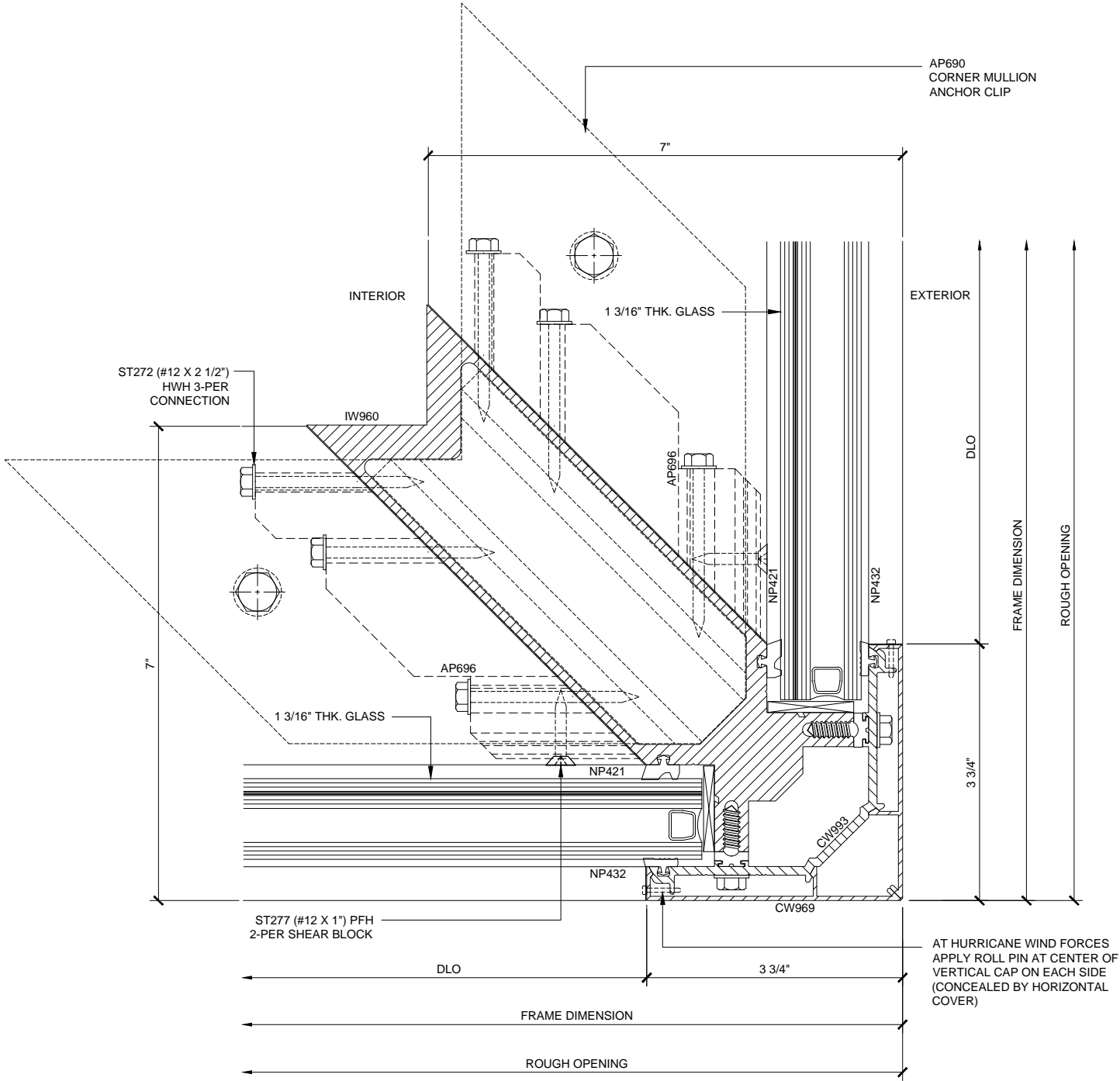
**U.S. ALUMINUM**  
C.R. LAURENCE CO. ARCHITECTURAL PRODUCTS  
2303 E. Vernon Avenue, Los Angeles, CA 90058-1897  
PH (800) 421-6144 FX 800-587-7501 www.crlaurence.com

U.S. ALUMINUM  
SERIES IW3250 STORM WALL  
IMPACT RESISTANT  
CURTAIN WALL SYSTEM

Drawn By: RPD  
Date: 03/11/15  
Scale: AS NOTED  
File Name: IW3250.dwg  
Sheet

3.02

U.S. ALUMINUM SERIES IW3250 STORM WALL IMPACT RESISTANT CURTAIN WALL SYSTEM



CORNER VERTICAL PLAN 18  
7" DEEP SYSTEM 1'-0"=1'-0"

CURTAIN WALL SERIES IW3250 7" DEEP SYSTEM DETAILS

Revisions By:

CAL

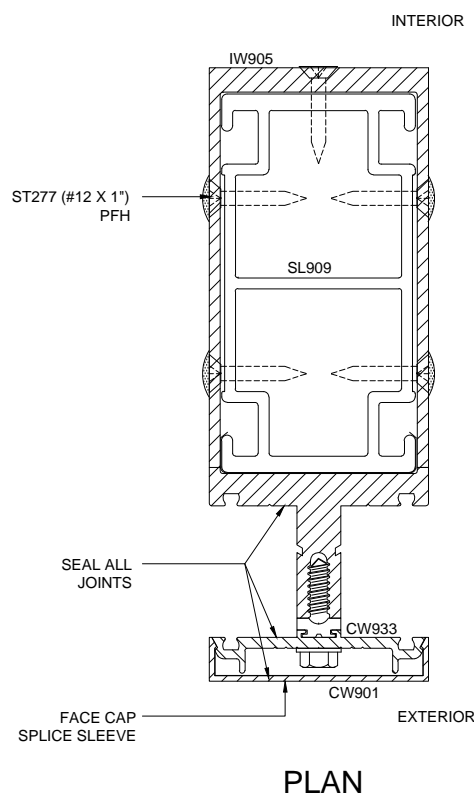
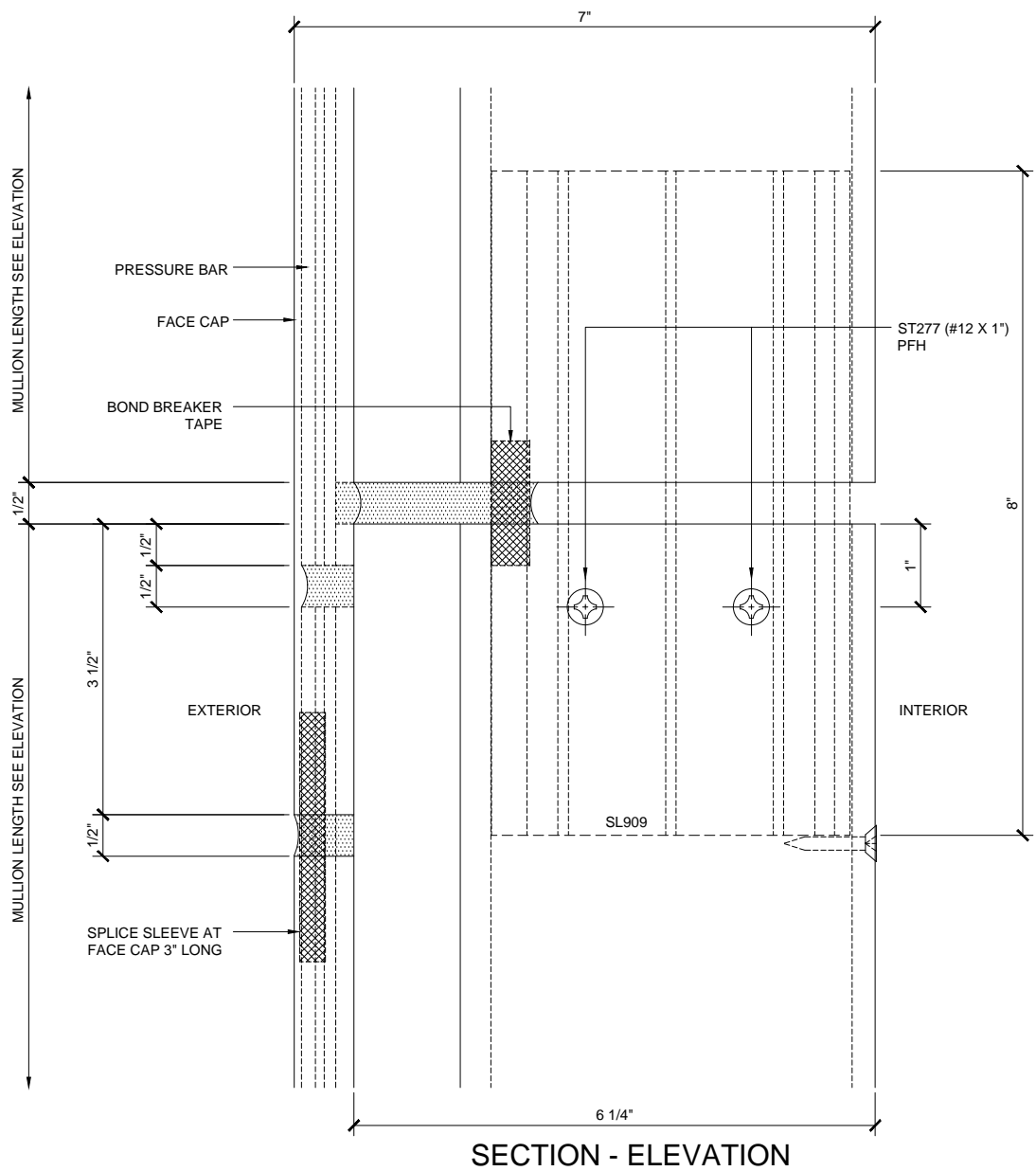
U.S. ALUMINUM

C.R. LAURENCE CO. ARCHITECTURAL PRODUCTS  
2303 E. Vernon Avenue, Los Angeles, CA 90058-1897  
PH: (800) 421-6144 FX: 800-587-7501 www.crlaurence.com

Discription:  
U.S. ALUMINUM  
SERIES IW3250 STORM WALL  
IMPACT RESISTANT  
CURTAIN WALL SYSTEM

Drawn By: RPD  
Date: 03/11/15  
Scale: AS NOTED  
File Name: IW3250.dwg  
Sheet

3.03



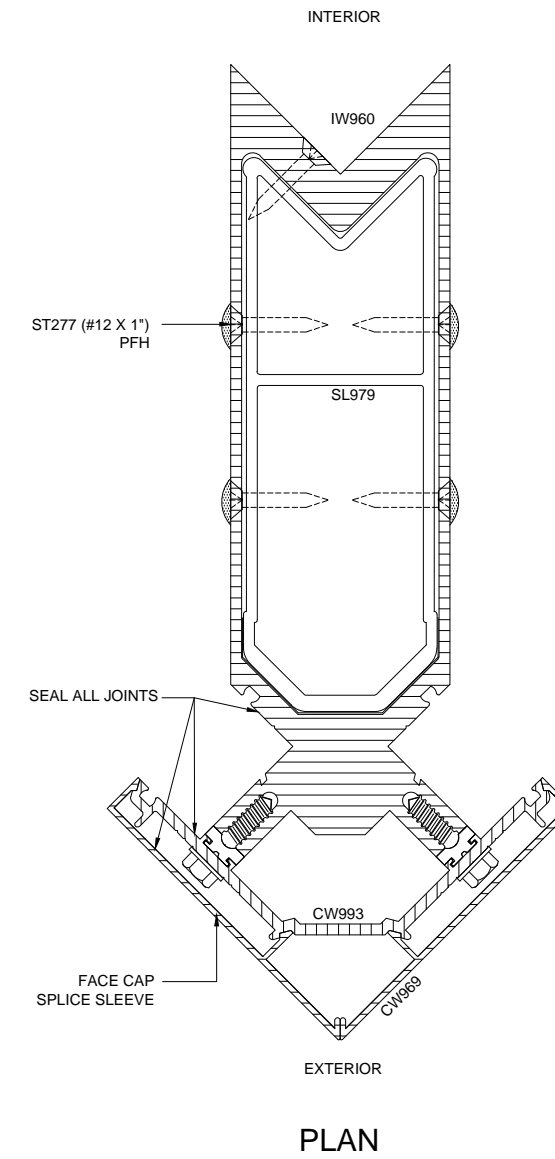
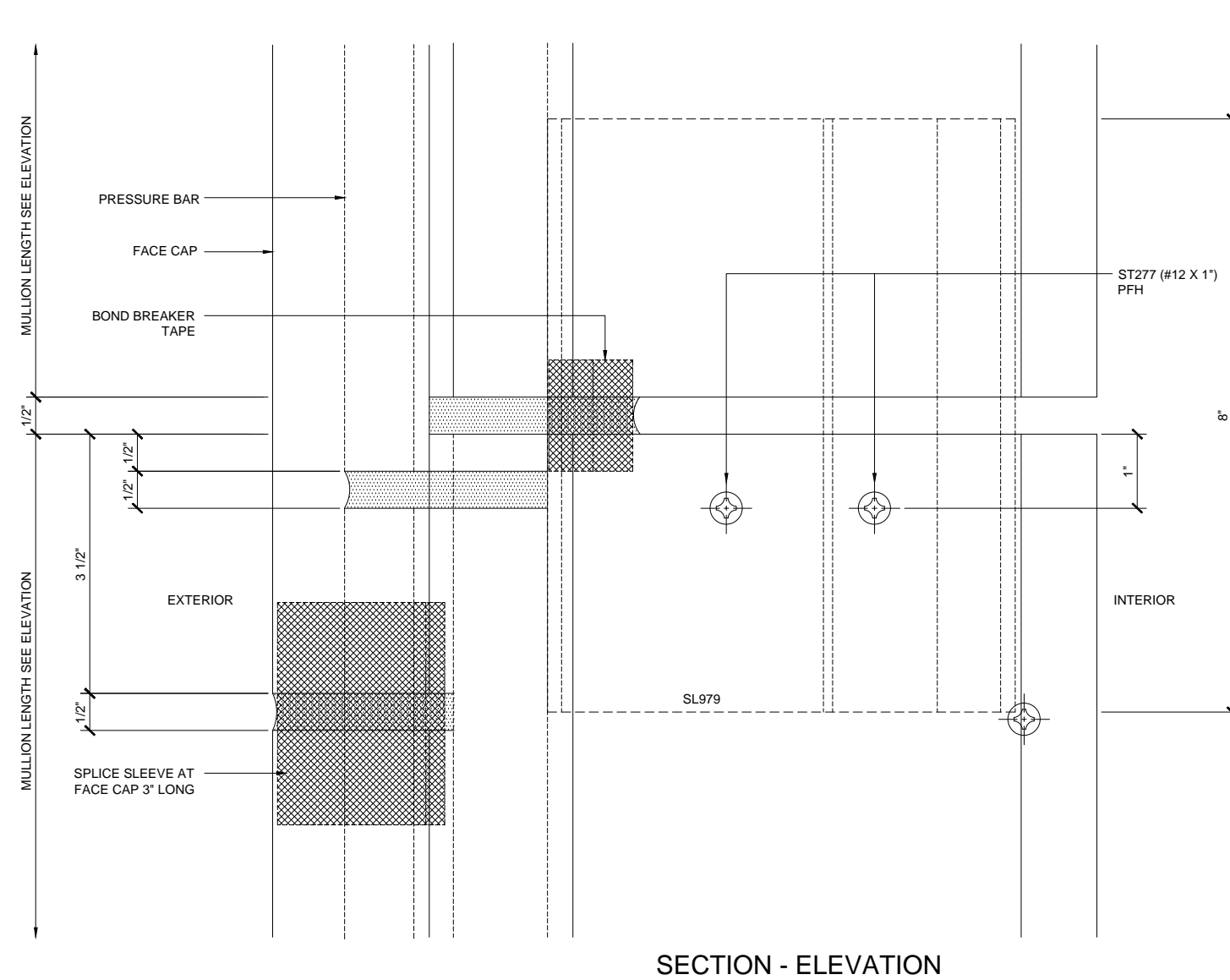
VERTICAL SPLICE DETAILS 26  
7" DEEP SYSTEM 1'-0"=1'-0"

CURTAIN WALL SERIES IW3250 7" DEEP SYSTEM DETAILS

Revisions By:	
<div style="display: flex; align-items: center; justify-content: center;"><div style="font-size: 48px; font-weight: bold; margin-right: 10px;">C.A.L.</div><div style="text-align: left;"><div style="font-size: 24px; font-weight: bold; margin-bottom: 5px;">U.S. ALUMINUM</div><div style="font-size: 10px; line-height: 1.2;">C.R. LAURENCE CO. ARCHITECTURAL PRODUCTS 2303 E. Vernon Avenue, Los Angeles, CA 90058-1897 PH: (800) 421-6144 FX: 800-587-7501 www.crlaurence.com</div></div></div>	
Description:	U.S. ALUMINUM SERIES IW3250 STORM WALL IMPACT RESISTANT CURTAIN WALL SYSTEM
Drawn By: RPD	
Date: 03/11/15	
Scale: AS NOTED	
File Name: IW3250.dwg	
Sheet	
3.04	

## U.S. ALUMINUM SERIES IW3250 STORM WALL IMPACT RESISTANT CURTAIN WALL SYSTEM

Revisions By:



## CORNER SPLICE DETAILS 27

## CURTAIN WALL SERIES IW3250 7" DEEP SYSTEM DETAILS

**CAL**  
**ALUMINUM**

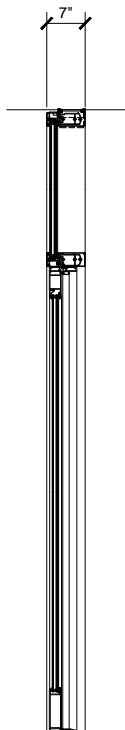
C.R. LAURENCE CO. ARCHITECTURAL PRODUCTS  
2520 E. Verrion Avenue, Los Angeles, CA 90058-1897  
PH (800)-421-6144 FX 800-387-7501 [www.crlaurence.com](http://www.crlaurence.com)

Description:

U.S. ALUMINUM  
SERIES IW3250 STORM WALL  
IMPACT RESISTANT  
CURTAIN WALL SYSTEM

Drawn By:	RPD
Date:	03/11/15
Scale:	AS NOTED
File Name:	IW3250.dwg
Sheet	

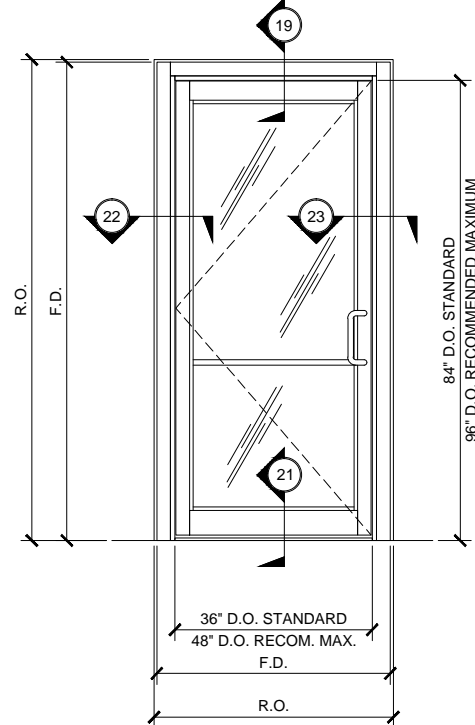
3.05



SECTION

---

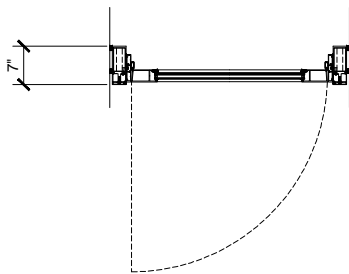
3/4" = 1'-0"



SECTION

---

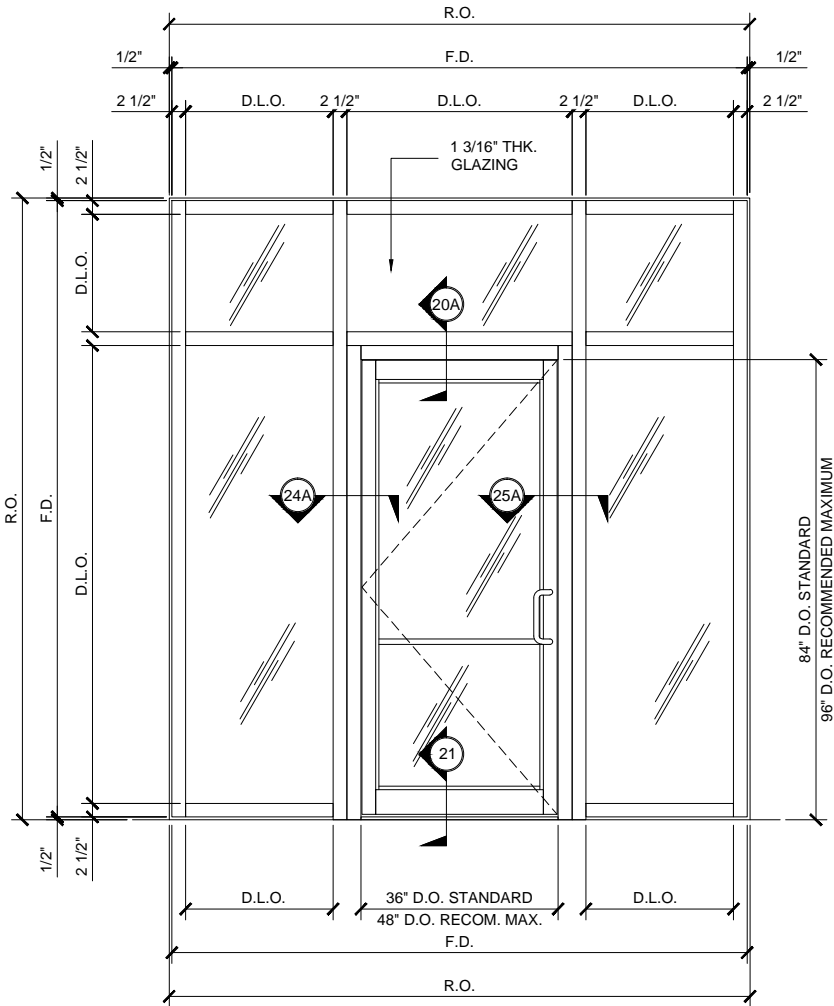
3/4" = 1'-0"



**TYPICAL OH DOOR FRAMING PLAN**

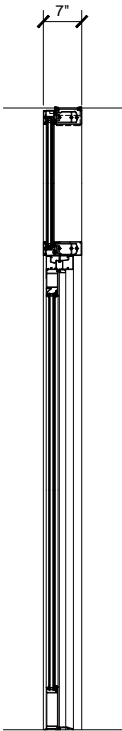
7" DEEP SYSTEM SCALE: 3/4" = 1'-0"





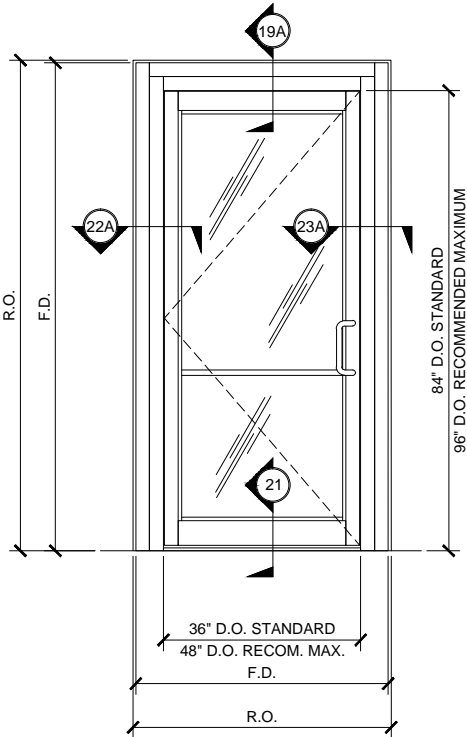
TYPICAL OH DOOR FRAMING ELEVATION

7" DEEP SYSTEM (WITH SIDE LITES)  
(ALTERNATE ELEVATION) SCALE: 3/4" = 1'-0"



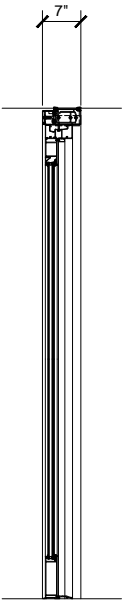
SECTION

3/4" = 1'-0"



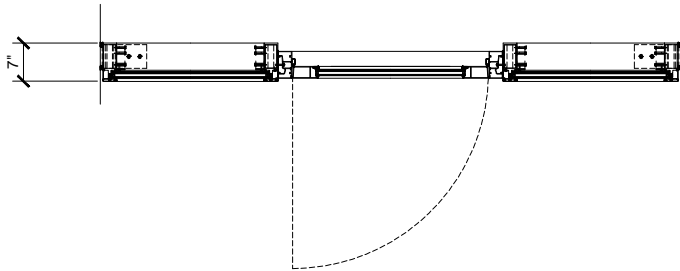
TYPICAL OH DOOR FRAMING ELEVATION

7" DEEP SYSTEM  
(ALTERNATE ELEVATION) SCALE: 3/4" = 1'-0"



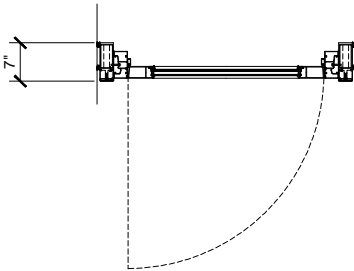
SECTION

3/4" = 1'-0"



TYPICAL OH DOOR FRAMING PLAN

7" DEEP SYSTEM (WITH SIDE LITES)  
(ALTERNATE PLAN) SCALE: 3/4" = 1'-0"



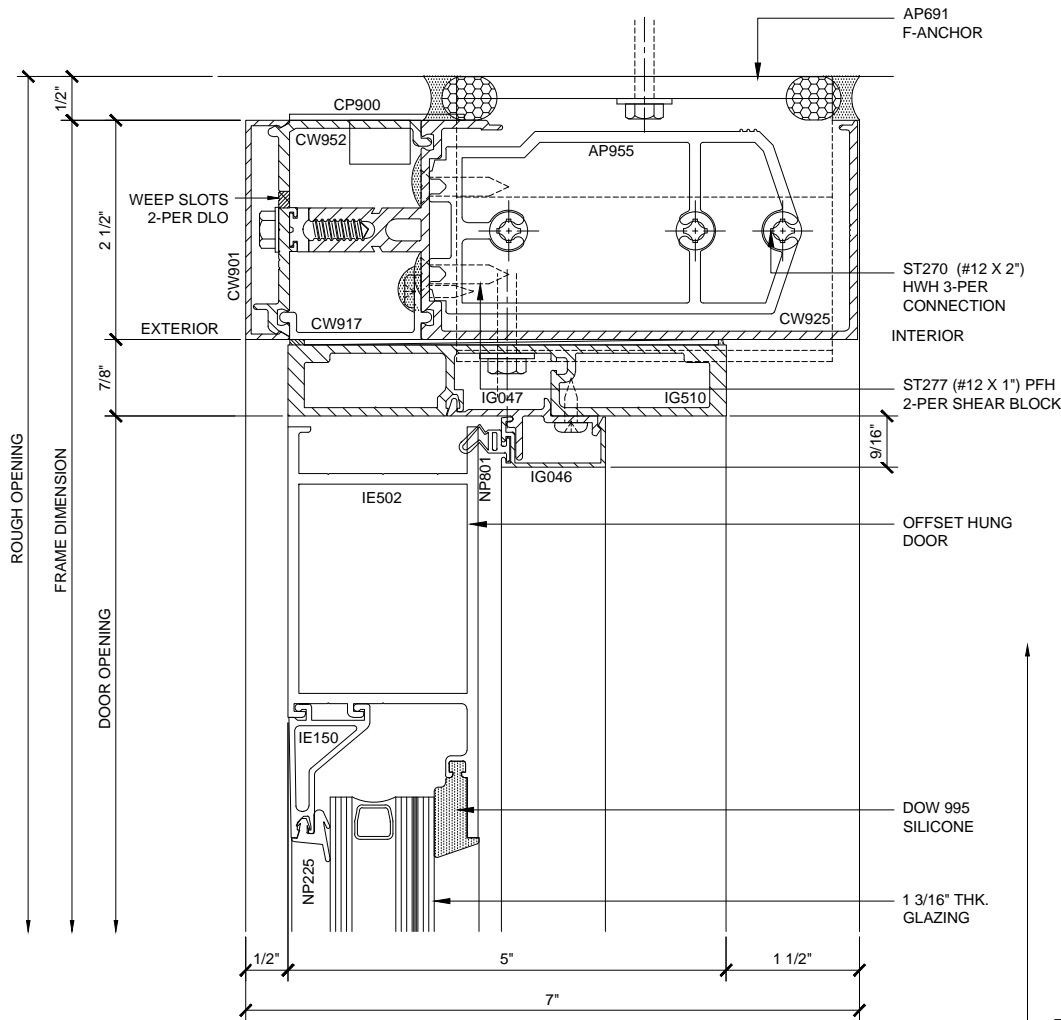
TYPICAL OH DOOR FRAMING PLAN

7" DEEP SYSTEM  
(ALTERNATE PLAN) SCALE: 3/4" = 1'-0"

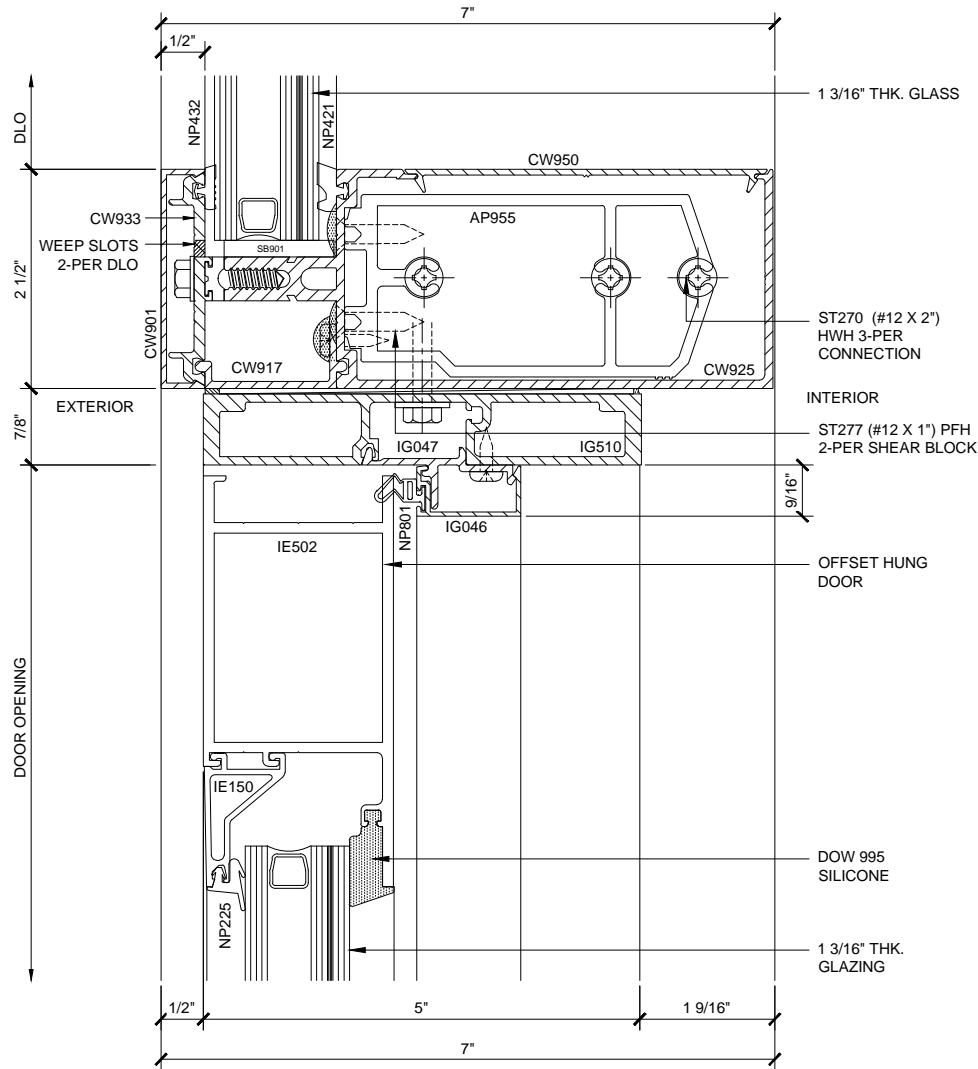
CURTAIN WALL SERIES IW3250 TYPICAL DOOR ELEVATIONS

7" DEEP SYSTEM (ALTERNATE PLANS & ELEVATIONS)

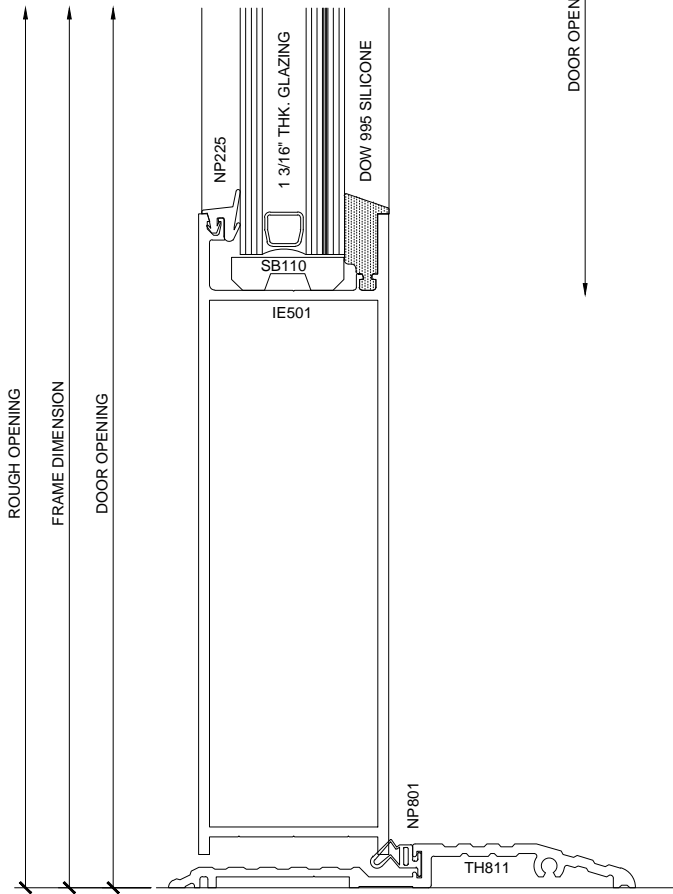
U.S. ALUMINUM SERIES IW3250 STORM WALL IMPACT RESISTANT CURTAIN WALL SYSTEM



OH HEAD SECTION (19)  
7" DEEP SYSTEM 1'-0"=1'-0"



OH TRANSOM SECTION (20)  
7" DEEP SYSTEM 1'-0"=1'-0"



DOOR SILL SECTION (21)  
7" DEEP SYSTEM 1'-0"=1'-0"

CURTAIN WALL SERIES IW3250 7" DEEP SYSTEM DETAILS

Revisions By:

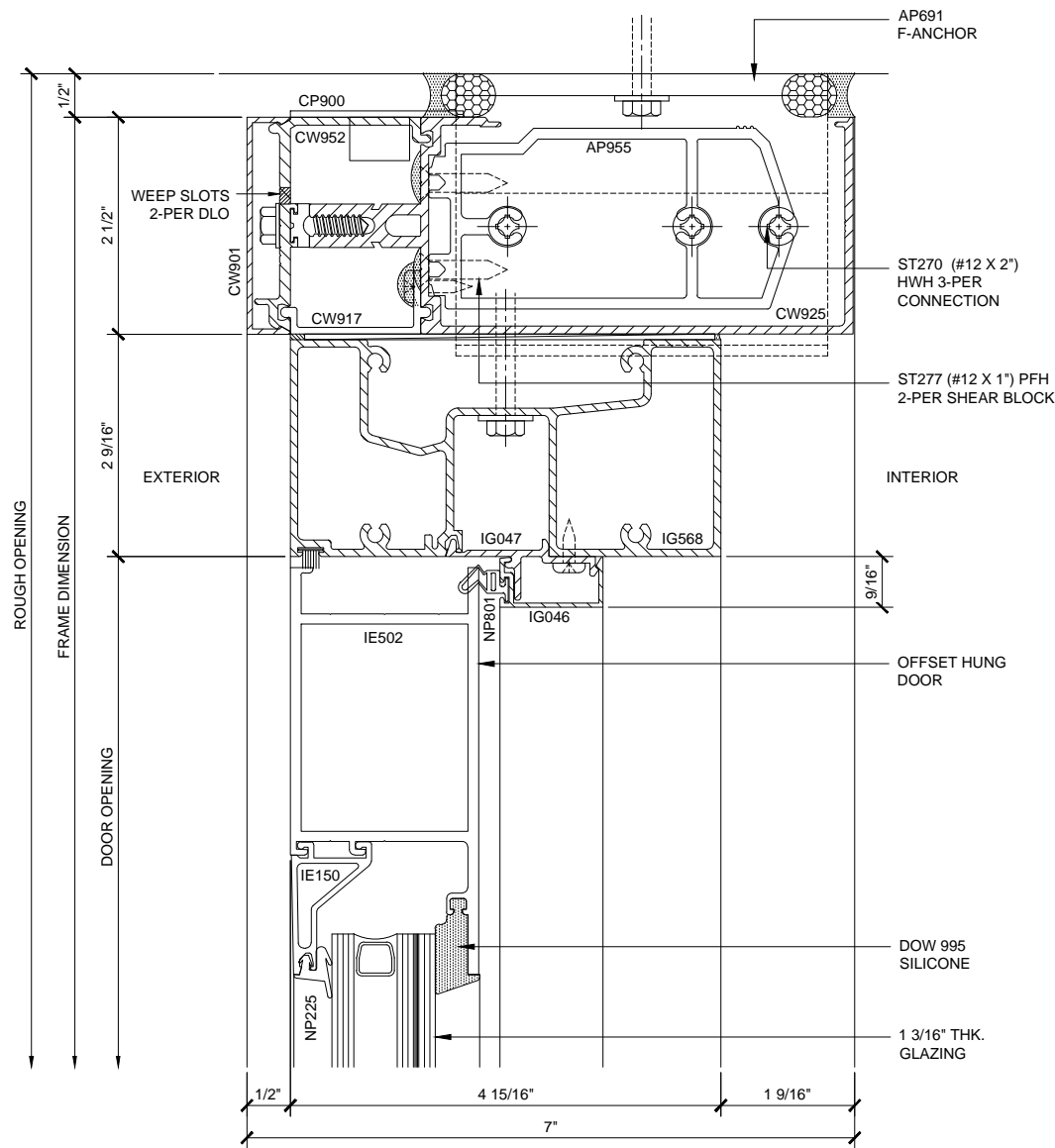


C.R. LAURENCE CO. ARCHITECTURAL PRODUCTS  
2303 E. Vernon Avenue, Los Angeles, CA 90058-1897  
PH (800) 421-6144 FX 800-587-7501 www.crlaurence.com

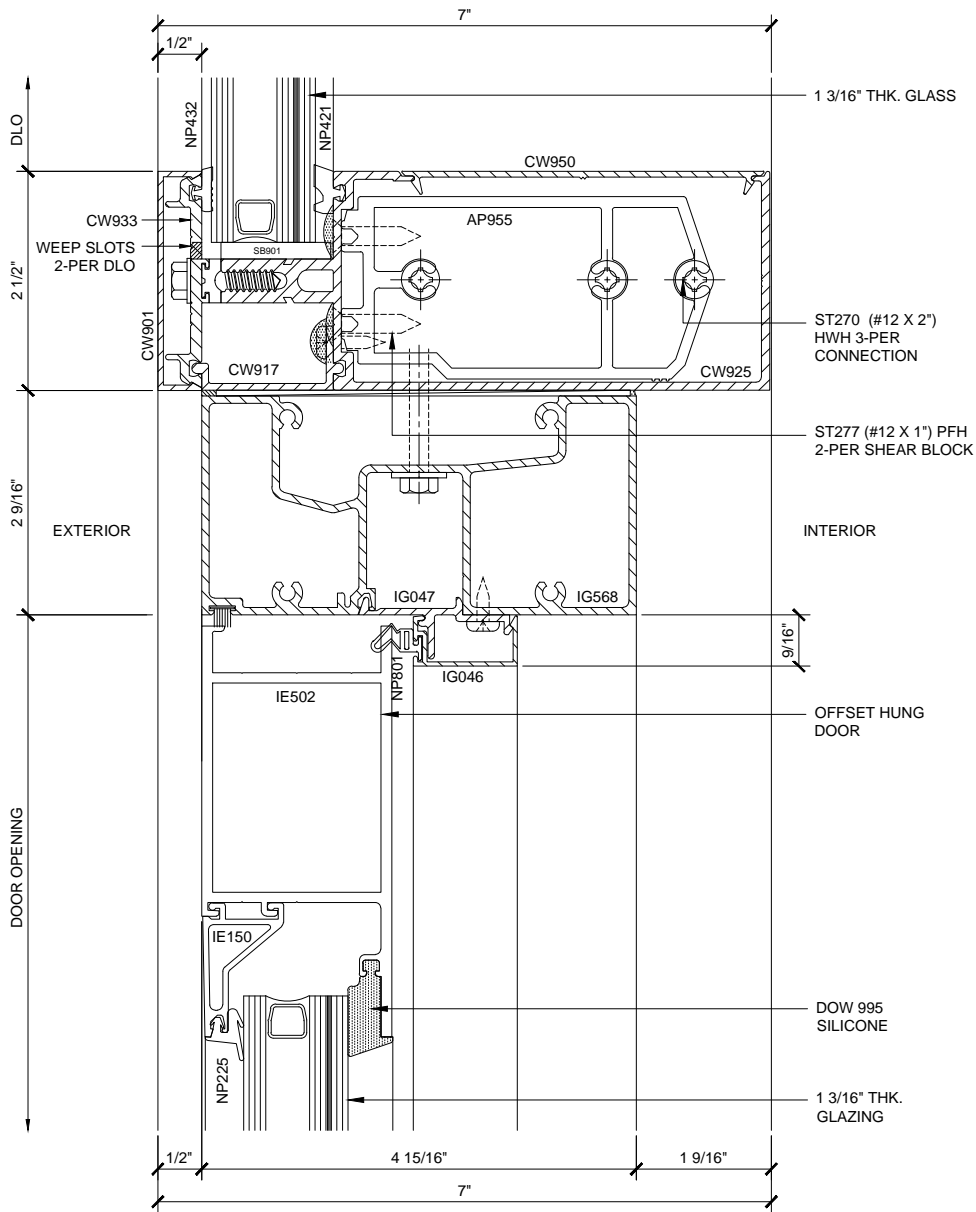
Discription:  
U.S. ALUMINUM  
SERIES IW3250 STORM WALL  
IMPACT RESISTANT  
CURTAIN WALL SYSTEM

Drawn By: RPD  
Date: 03/11/15  
Scale: AS NOTED  
File Name: IW3250.dwg  
Sheet

U.S. ALUMINUM SERIES IW3250 STORM WALL IMPACT RESISTANT CURTAIN WALL SYSTEM



OH HEAD SECTION 19A  
7" DEEP SYSTEM (ALTERNATE DETAIL) 1'-0"=1'-0"



OH TRANSOM SECTION 20A  
7" DEEP SYSTEM (ALTERNATE DETAIL) 1'-0"=1'-0"

CURTAIN WALL SERIES IW3250 7" DEEP SYSTEM DETAILS

Revisions By:

CAL

U.S. ALUMINUM

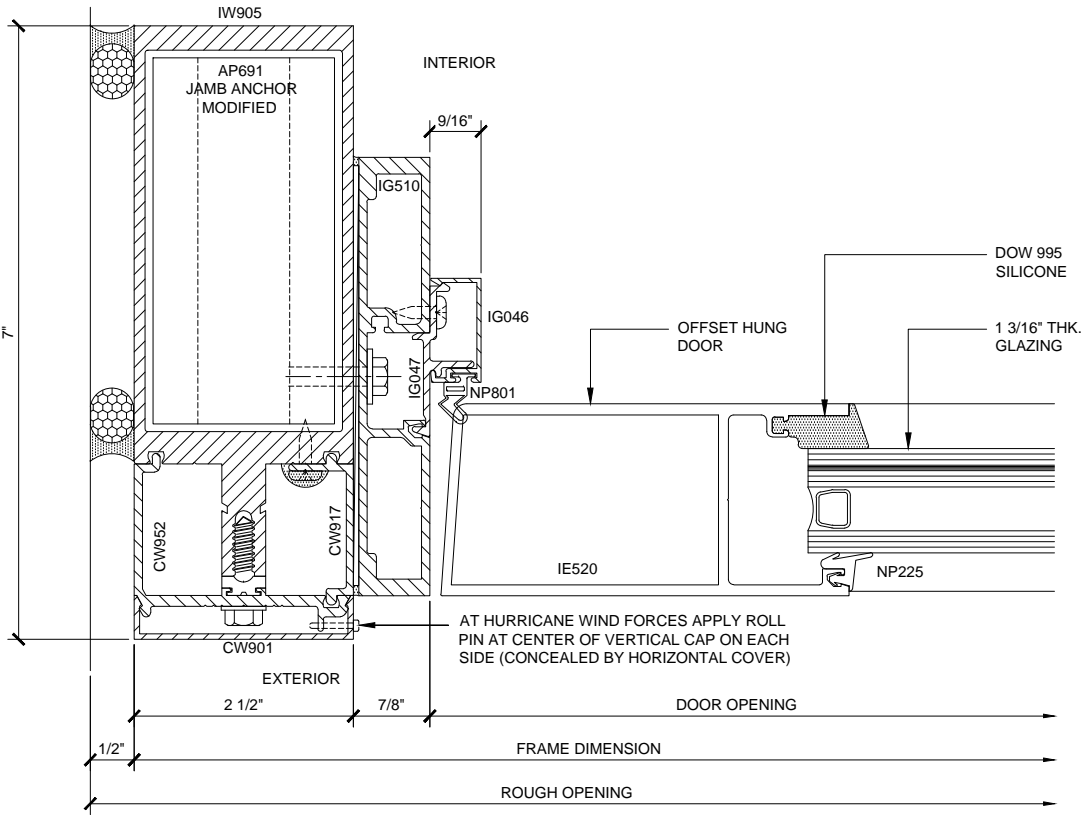
C.R. LAURENCE CO. ARCHITECTURAL PRODUCTS  
2303 E. Vernon Avenue, Los Angeles, CA 90058-1897  
PH: (800) 421-6144 FX: 800-587-7501 www.crlaurence.com

Discription:  
U.S. ALUMINUM  
SERIES IW3250 STORM WALL  
IMPACT RESISTANT  
CURTAIN WALL SYSTEM

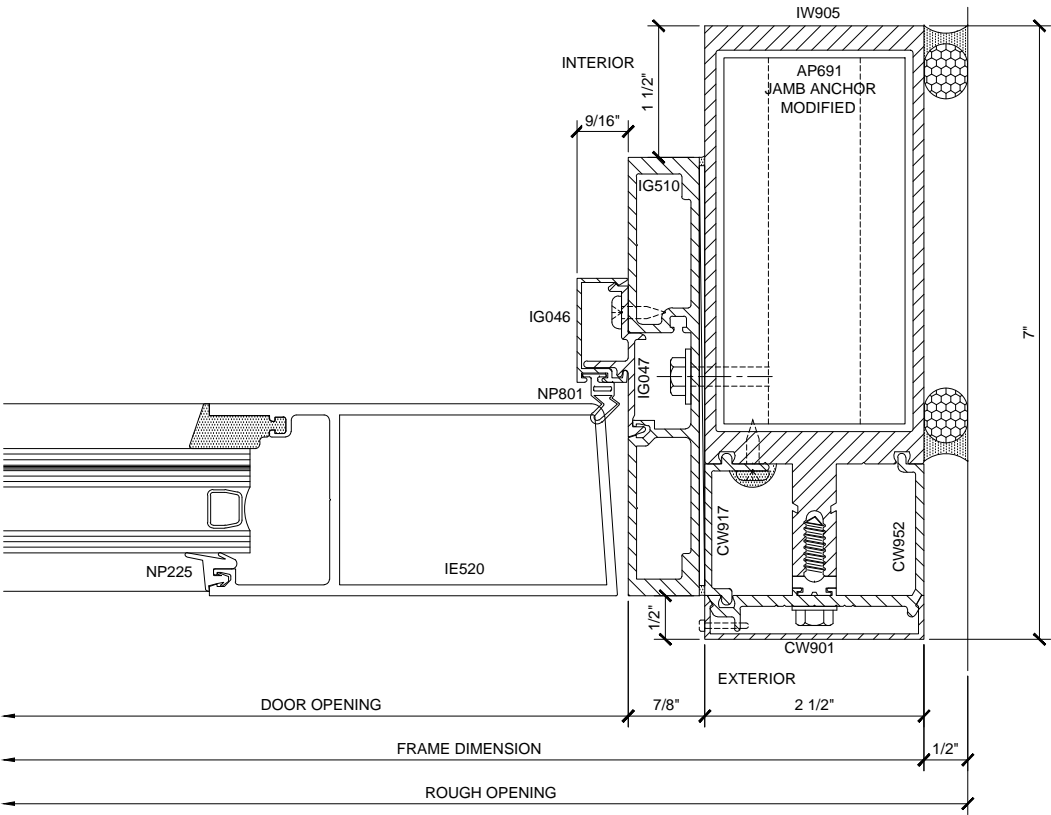
Drawn By: RPD  
Date: 03/11/15  
Scale: AS NOTED  
File Name: IW3250.dwg  
Sheet

4.02A

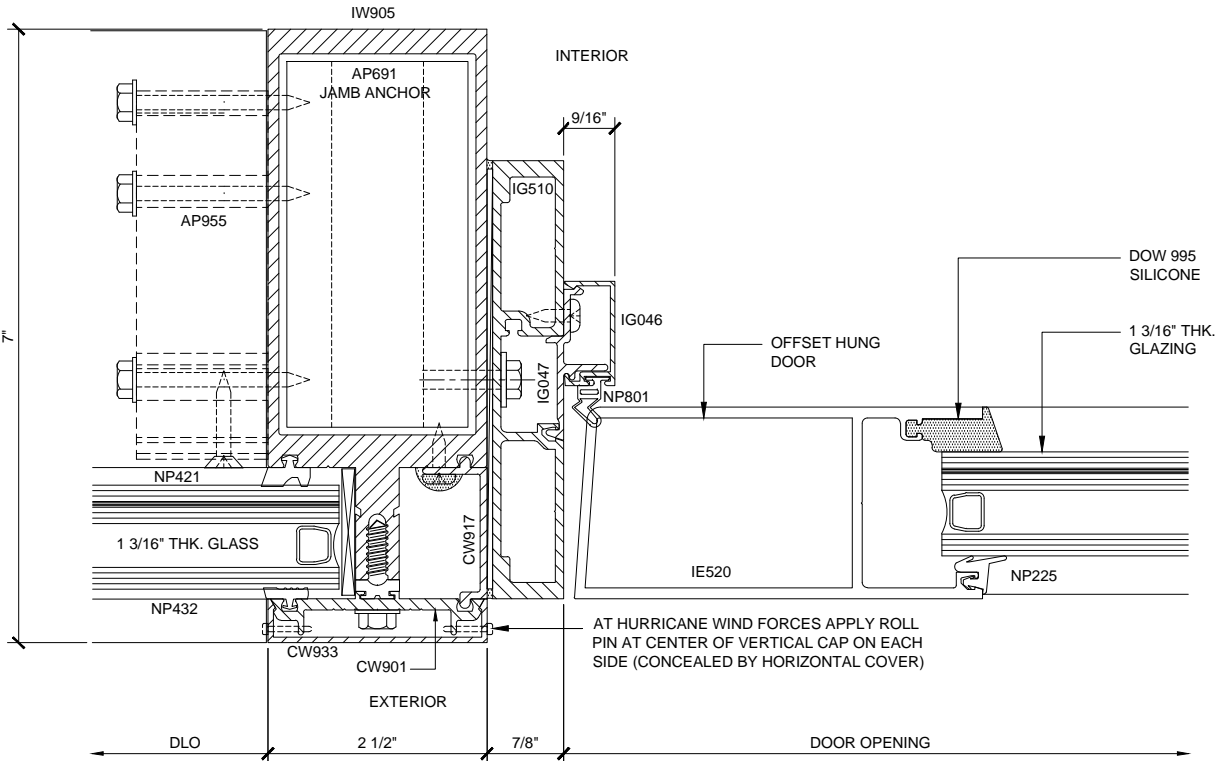
U.S. ALUMINUM SERIES IW3250 STORM WALL IMPACT RESISTANT CURTAIN WALL SYSTEM



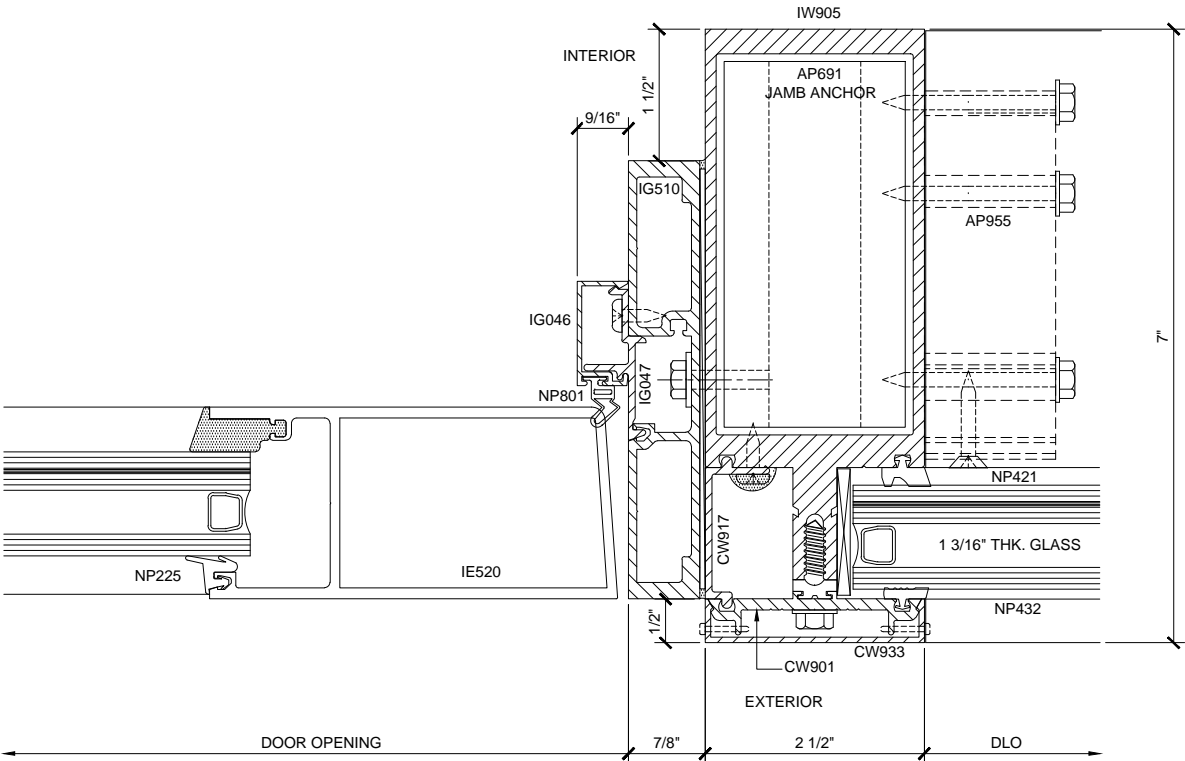
DOOR JAMB SECTION 22  
7" DEEP SYSTEM 1'-0"=1'-0"



DOOR JAMB SECTION 23  
7" DEEP SYSTEM 1'-0"=1'-0"



SIDELITE / DOOR JAMB SECTION 24  
7" DEEP SYSTEM 1'-0"=1'-0"



SIDELITE / DOOR JAMB SECTION 25  
7" DEEP SYSTEM 1'-0"=1'-0"

CURTAIN WALL SERIES IW3250 7" DEEP SYSTEM DETAILS

Revisions By:

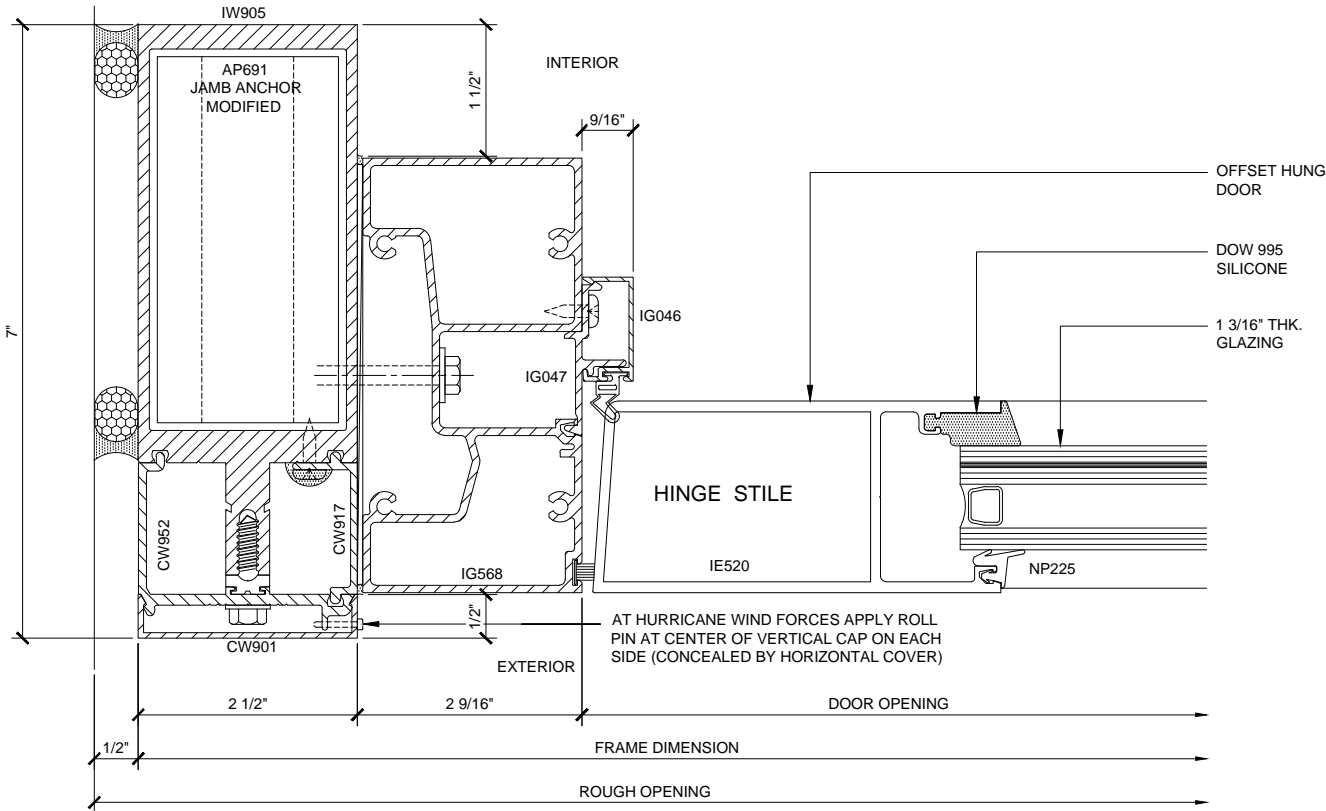


C.R. LAURENCE CO. ARCHITECTURAL PRODUCTS  
2303 E. Vernon Avenue, Los Angeles, CA 90058-1897  
PH (800) 421-6144 FX 800-587-7501 www.crlaurence.com

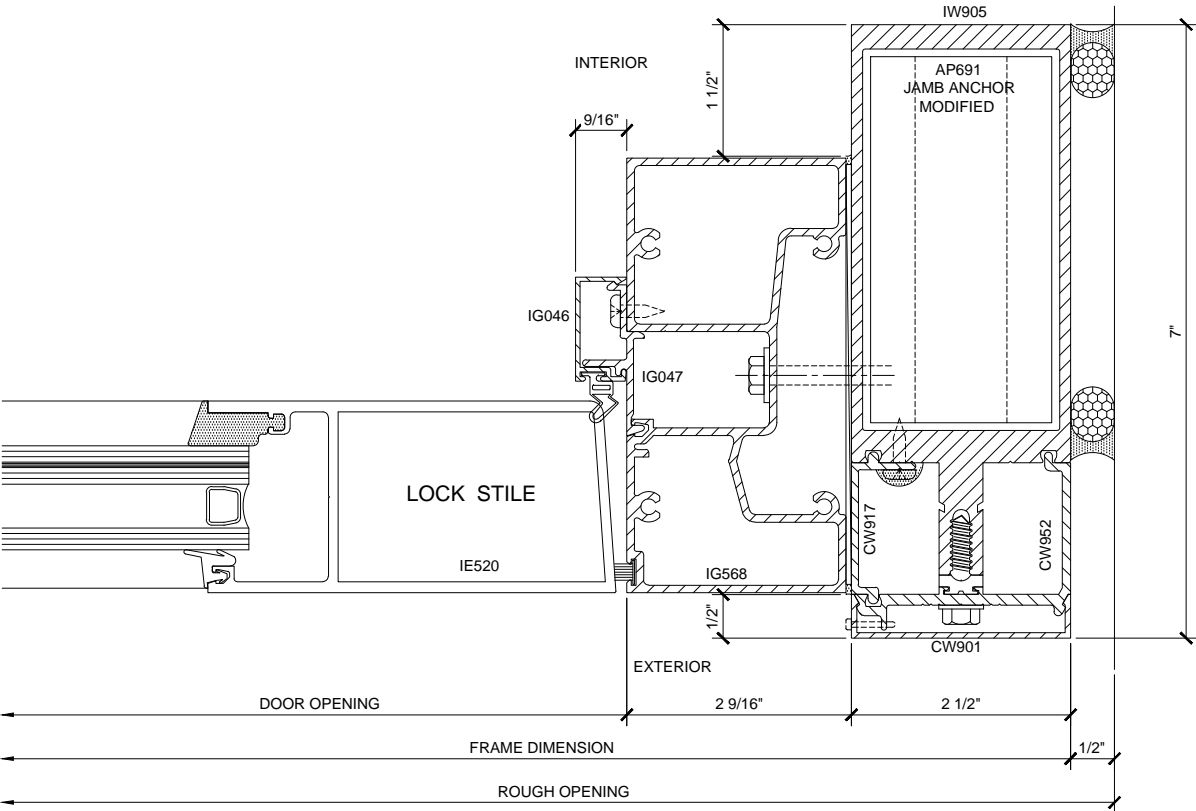
Discription:  
U.S. ALUMINUM  
SERIES IW3250 STORM WALL  
IMPACT RESISTANT  
CURTAIN WALL SYSTEM

Drawn By: RPD  
Date: 03/11/15  
Scale: AS NOTED  
File Name: IW3250.dwg  
Sheet

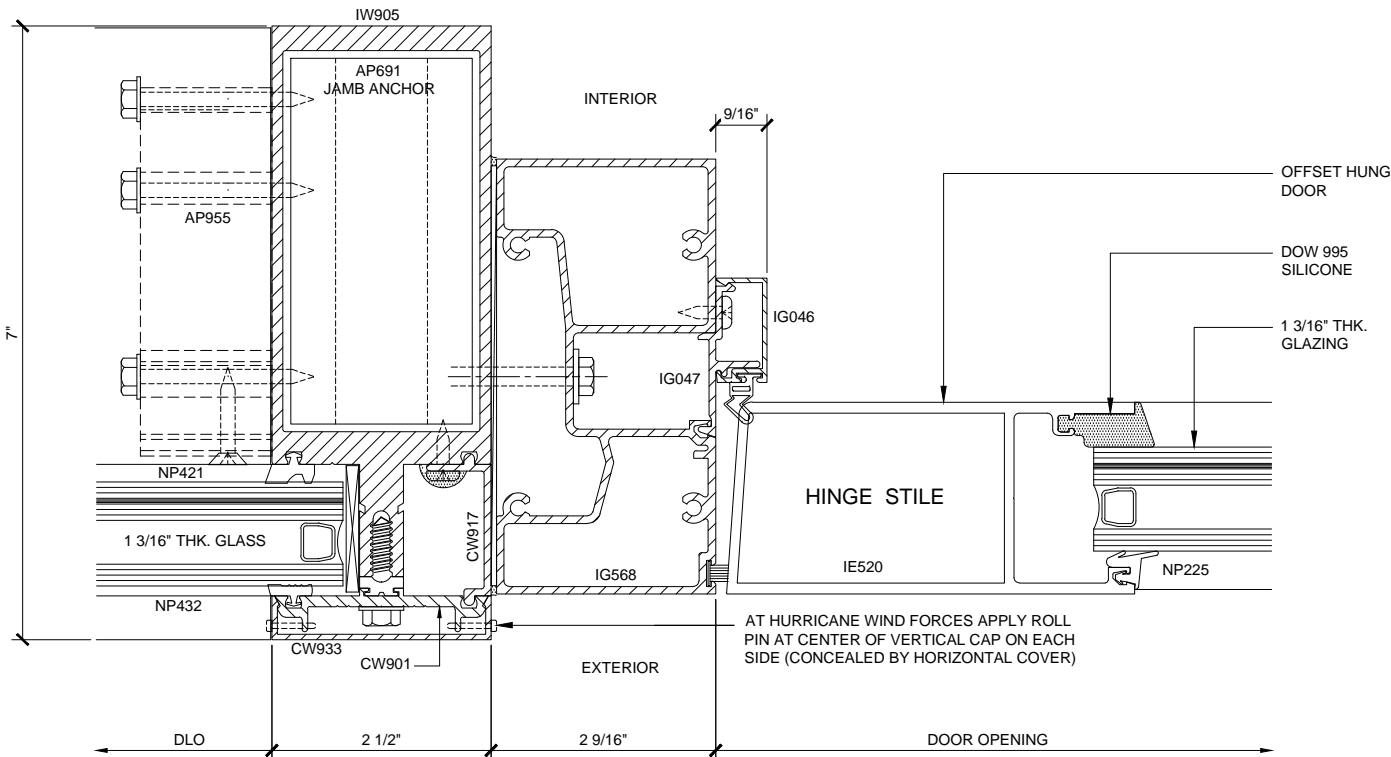
U.S. ALUMINUM SERIES IW3250 STORM WALL IMPACT RESISTANT CURTAIN WALL SYSTEM



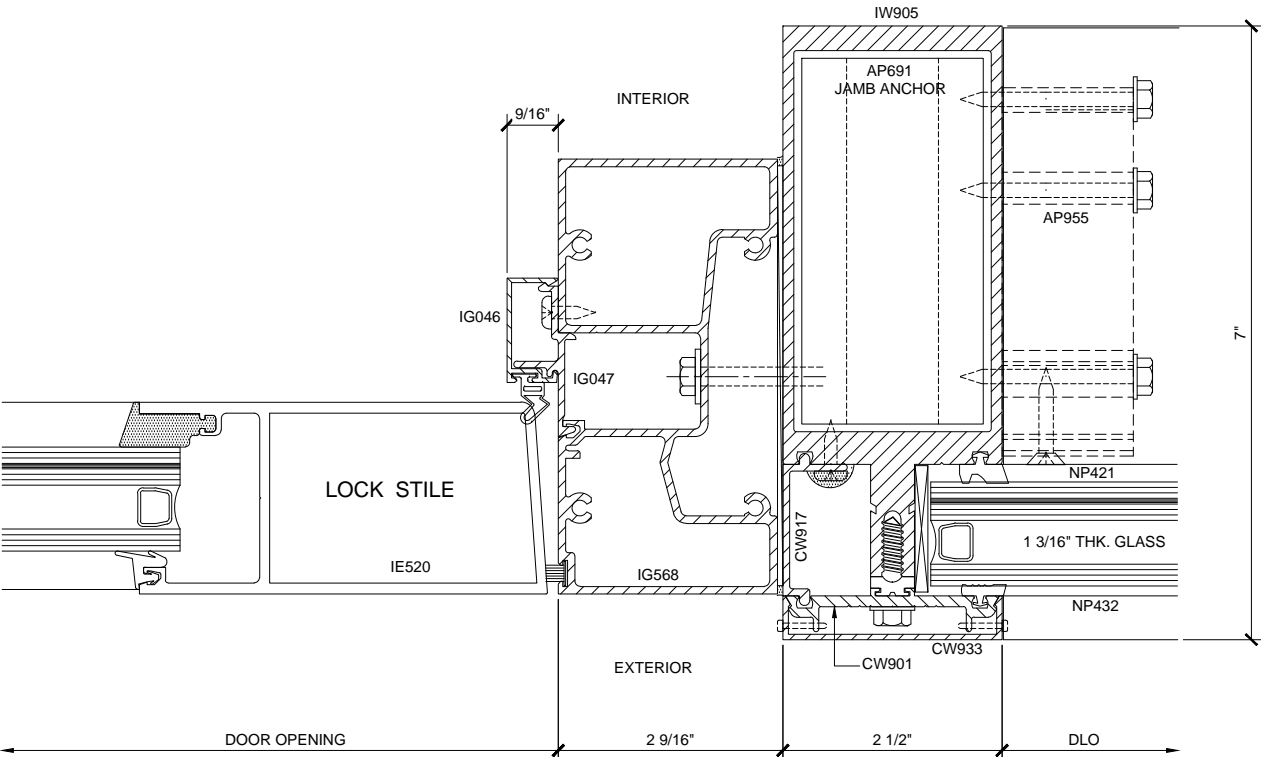
DOOR JAMB SECTION 22A  
7" DEEP SYSTEM (ALTERNATE DETAIL) 1'-0"=1'-0"



DOOR JAMB SECTION 23A  
7" DEEP SYSTEM (ALTERNATE DETAIL) 1'-0"=1'-0"



SIDELITE / DOOR JAMB SECTION 24A  
7" DEEP SYSTEM (ALTERNATE DETAIL) 1'-0"=1'-0"



SIDELITE / DOOR JAMB SECTION 25A  
7" DEEP SYSTEM (ALTERNATE DETAIL) 1'-0"=1'-0"

CURTAIN WALL SERIES IW3250 7" DEEP SYSTEM DETAILS

Revisions By:

CAL

U.S. ALUMINUM

C.R. LAURENCE CO. ARCHITECTURAL PRODUCTS  
2303 E. Vernon Avenue, Los Angeles, CA 90058-1897  
PH (800) 421-6144 FX 800-587-7501 www.crlaurence.com

Discription:  
U.S. ALUMINUM  
SERIES IW3250 STORM WALL  
IMPACT RESISTANT  
CURTAIN WALL SYSTEM

Drawn By: RPD  
Date: 03/11/15  
Scale: AS NOTED  
File Name: IW3250.dwg  
Sheet

4.03A