

CRL CONTEMPO SERIES SLIDING SHOWER DOOR KIT CAT. NO. CON73

180 DEGREE INSTALLATION INSTRUCTIONS

STANDARD CON73

180 DEGREE KIT INCLUDES:

- One 73" (1854 mm) Length Header Bar
- Four Hangers
- Two Stoppers
- Two Track Holder Fittings
- One Bottom Door Guide
- Two 85" (2159 mm) Clear L-Jamb Seal
- One 73-13/16" (1875 mm) Threshold



CAT. NO. CONH1
Header Bar



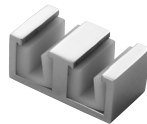
CAT. NO. CONR4
Hangers



CAT. NO. CONS2
Stoppers



CAT. NO. CONW2
Track Holder Fitting



CAT. NO. CONG1
Bottom Guide



CAT. NO. DK98L
L-Seal



CAT. NO. CONT1
Threshold



CAT. NO. CON90
Optional 90 Degree Accessory Kit
for Return Panels
(Shown with Track Holder Fitting)
(Ordered Separately)

- 1) The Header Bar is positioned exactly in the middle of the sliding doors. There is a 13/16" (21 mm) gap between the (2) sliding door panels. The overall width of the Header is 2-7/16" (62 mm). Due to the extremely smooth nature of the rollers, the Header Support Bar must be installed level. Failure to do so could result in a sliding door that rolls to one side by itself.
- 2) To locate the holes in the vertical walls for mounting the Header Bar, take the intended overall height and deduct 3/4" (19 mm). This figure will represent the height location from the curb to the center of the holes in the wall mount fitting. Drill the holes and mount the Track Holder Fitting with the serrated plate installed on the back of each mounting bracket. This allows adjustment without drilling any new holes in the tile or stone.
- 3) Cut header 15/16" (24 mm) shorter than the wall to wall tight dimension where the header bar is mounted.
- 4) Slide (2) sets of hangers on each side of the header bar and then set header bar into the Track Holder Fittings. Make sure header is level. Install screw at the bottom of the header into the wall mount bracket.
- 5) Install the doors on the Header Bar.
- 6) With the doors hanging on the Header Bar and in the closed position, place the Bottom Guide to the desired location. Mark the base/curb by outlining around the bottom guide. Remove the doors and carefully set aside.
- 7) Place the Bottom Guide in the correct position and mark the base/curb for drilling. Mount the Bottom Guide.
- 8) Re-hang the doors, placing the glass inside the Bottom Guide.
- 9) A DK98L L-Seal must be used to prevent the sliding glass from colliding into the tile/stone. Cut the DK98L to length from the base/curb to the top of the sliding door glass. Close the door to the wall, and using the sliding door as a guide, locate the DK98L L-seal on the wall. After taping the seal to the wall, run a bead of RTV408 silicone on the inside and outside of the seal to assure it doesn't come loose after time.
- 10) To minimize water escape, install the Threshold on the outside of the slider unit.
- 11) In the kit there are 2 Stoppers. These are to be installed if the doors have to be stopped at a certain area.

CRL CONTEMPO SERIES SLIDING SHOWER DOOR KIT CAT. NO. C0N73

GLASS AND METAL CUTTING FORMULA FOR 180 DEGREE APPLICATION

SPECIFICATION

- Overall Width = Wall to Wall Distance
- Overall Height = Height from Curb to Top of Header
- Sliding Glass Panels Overlap 2" (51 mm)

GLASS SIZING

- Width of Sliding Glass = Overall width divided by 2, plus 7/8" (22 mm)
- Height of Sliding Glass = Overall Height - 2-3/4" (70 mm)
- Remember - Overall Height is Determined from Curb to Top of Header

METAL CUTTING FORMULA

- 15/16" (24 mm) less than the wall to wall tight dimension

