

How to Install a Security Door

Step 1: Identify which way the Security Door is to open

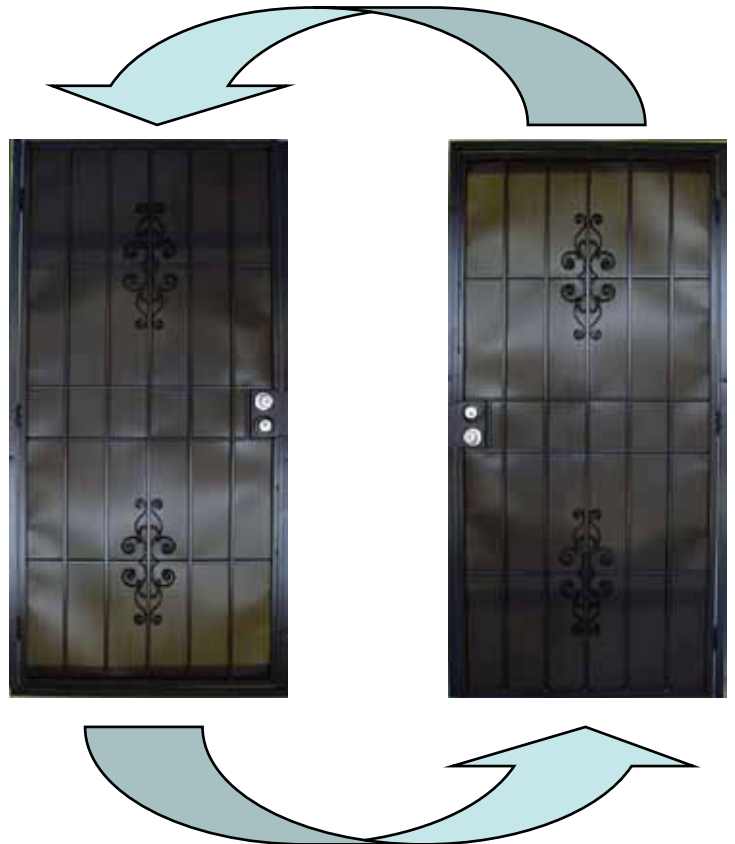
- Most Security Doors are hinged on the same side as the entry door.
- Since the door will open to the outside, be sure to check for obstructions that may prevent it from opening fully.

For our door we want the hinges to be on the right side of the opening.



Most Security Doors are reversible for left or right hand installation

- Simply turn the door over to place the hinges on the desired side for installation.



** Our Hummingbird model is NOT reversible. This door must be purchased as right or left hand. Packaging is clearly marked.*

How to Install a Security Door

Step 2: Install the Lockset (Sold Separately)

- Lockset should have a 2-3/8" backset
- After installation, fully extend the lock bolts into the "locked" position.



Step 3: Mark Holes for Drilling

- Begin by placing the Security Door in front of the opening at the desired height, with the hinges on the proper side as determined in Step 1.
- Using a level or string plumb, make sure the Security Door is vertically plumb.
- Mark through the pre-drilled holes on the hinge-side jamb with a pencil to determine where to drill.

Check to make sure the security door hardware does not interfere with the hardware of the entry door! Raise or lower the security door as needed.



Tip: Placing something under the door can help ensure an even gap along the bottom. For our door we used the header jamb as our guide.

How to Install a Security Door

Step 4: Drill the Holes and Hang the Door

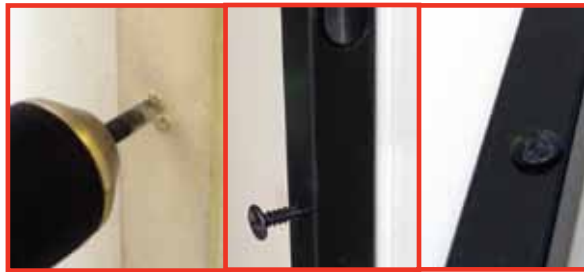
- Drill the holes for the hinge-side jamb as marked in **Step 3** using a 3/16" drill bit.
- Fasten the door to the opening with the one-way security lag screws.
- Tighten the lag screws only halfway at this time, in case repositioning of the door is required later.



How to Install a Security Door

Step 5: Mount the Lock-Side Jamb

- Hold the lock-side jamb in place and mark the holes for drilling. Make sure the jamb is vertically plumb and that the holes cut in the side of the jamb line up with the extended bolts of the lockset and deadbolt.
- Drill the holes and mount the lock-side jamb with the one-way lag screws. Tighten the lag screws only halfway at this time.
- When you are satisfied with the position and operation of the security door, tighten all lag screws securely to the house.



Step 6: Install the Header Jamb

- Mount the header jamb at the top of the door using the remaining 2 one-way lag screws. Leave approximately 1/8" space between the header jamb and the top of the door frame.

