

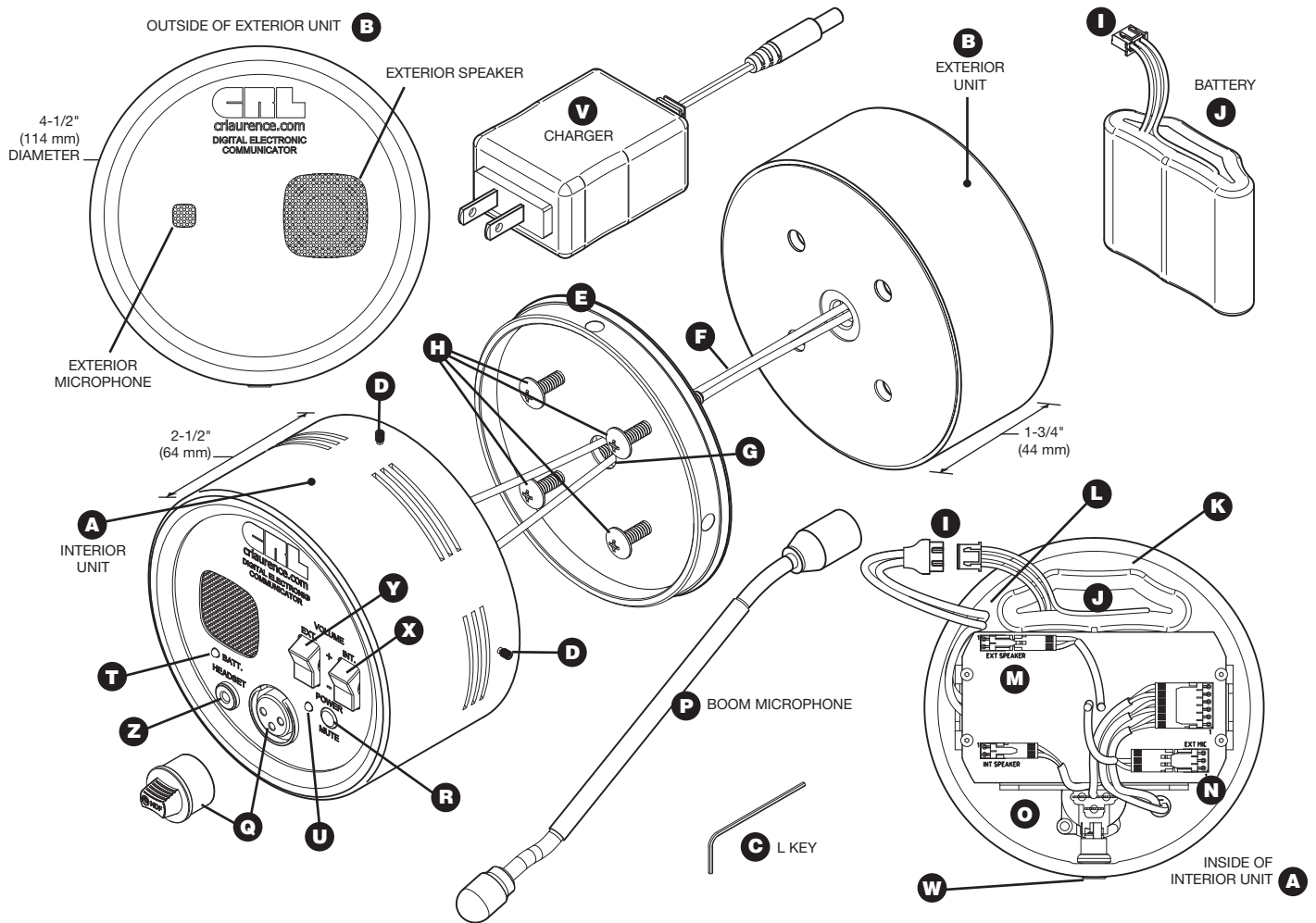
# C.R. LAURENCE CO., INC.

FOR MODELS: 9DSA 9DBL 9B1DSA 9B1DBL 9B3DSA 9B3DBL

## INSTALLATION INSTRUCTIONS FOR BATTERY OPERATED COMMUNICATORS

**PLEASE NOTE:** Two people are needed to install the Communicator, one on either side of the window.

The Communicator is designed to install over a 2-1/2" to 3-1/2" (64 to 89 mm) diameter hole, or a 5" (127 mm) diameter hole with the optional **9ADP5SA** or **9ADP5BL** Adapter Plates (not included).



1. Unpack the Interior Unit (A) and Exterior Unit (B). Check to be sure all parts shown on this diagram are included.
2. Using the supplied Hex L-Key (C), loosen the four radial set screws (D) located around the edge of the Interior Unit (A). Be careful not to lose the set screws.
3. Remove the Interior Mounting Plate (E) from the Interior Unit (A).
4. Place the Exterior Unit (B) up against the exterior side of the glass.
5. Position the Interior Mounting Plate (E) on the interior side of the glass as shown above, matching the hole-pattern to the Exterior Unit (B). Guide the wires (F) from the Exterior Unit through the center hole (G) of the Interior Mounting Plate (E).
6. Using the four supplied mounting screws (H); lightly tighten all the screws through the Interior Mounting Plate (E) and into the Exterior Unit (B). **NOTE:** Bullet resistant models will have extra sets of longer screws.
7. Center the assembly over the hole in the glass, and align the Exterior Unit (B).

8. By hand, tighten the four mounting screws (**H**) until the Exterior Unit (**B**) can no longer be rotated. Do not overtighten.
9. Install the Battery (**J**) into the upper cavity (**K**) of the Interior Housing with the battery wires (**I**) coming towards you. Plug the battery wires (**I**) into the matching cable. Pack the connectors and excess wire into the pocket (**L**) to the left of the battery (**J**).
10. Carefully connect the wires (**F**) from the Exterior Unit (**B**) to their corresponding connector sockets on the circuit board in the interior housing. Attach the 2-pin connector for the speaker to the 2-pin socket (**M**), and the 3-pin connector for the microphone to the 3-pin socket (**N**). **DO NOT TOUCH OTHER PARTS OF THE CIRCUIT BOARD**. Pack the excess wire (**F**) from the Exterior Unit (**B**) into the pocket (**O**) below the circuit board.
11. Install the Interior Housing (**A**) onto the Interior Mounting Plate (**E**). **DO NOT FORCE THE HOUSING**. If the housing does not slide over the Interior Mounting Plate (**E**) easily, check to see if a wire or set screw is in the way, or if the battery is not installed completely.
12. With the housing flush to the glass, rotate to align the Interior Unit (**A**) and tighten the four radial set screws (**D**) to complete the installation. Tighten the set screws evenly, one turn at a time, checking the alignment after each cycle. If a set screw will not engage, back the others out and re-align.

## SET UP INSTRUCTIONS

1. Remove the boom microphone socket cover (**Q**), and install the Boom Microphone (**P**) by plugging it into the socket (**Q**) on the Interior Unit (**A**). Retain the socket cover for future use.
2. Confirm that the Communicator starts by pressing the POWER/MUTE button (**R**). The BATTERY indicator (**T**) and POWER/MUTE indicator (**U**) should now be illuminated. If the unit does not start, check that the battery (**J**) was correctly installed and the battery cable (**I**) properly connected. If the Communicator has been in storage after shipping, it may be necessary to recharge the battery.
3. Plug in the battery charger (**V**) to the underside (**W**) of the Interior Unit (**A**) and into a 115V AC wall outlet. The BATTERY indicator (**T**) should blink Green to indicate charging. See CHARGING information below.
4. Verify that the Communicator works by talking into the Interior Boom Microphone (**P**) and the Exterior Microphone. Do not speak into the Interior Boom Microphone from closer than two inches (51 mm). See VOLUME adjustment notes below.

## CONTROLS

**POWER/MUTE** - When the Communicator is off, the POWER/MUTE Indicator (**U**) will not be lit.

Pushing the POWER/MUTE button (**R**) will start the Communicator. The POWER/MUTE Indicator (**U**) will be Green when the Communicator is **ON**.

Press again to cycle between **ON** and **MUTE**. In the **MUTE** mode the POWER/MUTE Indicator (**U**) will be flashing Red.

Depressing the switch for two seconds will turn the unit **OFF**. The POWER/MUTE Indicator (**U**) will not be lit when the Communicator is OFF.

**VOLUME** – To adjust the interior and exterior speaker volume, press the **INTERIOR** volume rocker switch (**X**) or **EXTERIOR** volume rocker switch (**Y**). Pressing the rocker switch up will increase the volume; pressing the switch down will decrease the volume. Try to keep the volume as low as needed to effectively communicate.

**CHARGING** – When the battery (**J**) needs to be charged, the BATTERY indicator (**T**) will be blinking Red. Typical charge time is three hours, and the Communicator can be used while charging. While charging, indicator (**T**) will be blinking Green.

**HEADSET** (sold separately) can be used instead of Boom Microphone (**P**) by plugging it into the 2.5 mm headset jack (**Z**).