

CRL ALUMINUM DOOR MOUNTED STANDARD PULL HANDLES

FASTENERS		
PART NUMBER	DESCRIPTION	USE
RN1420	CRL 1/4"-20 Rivet Nut	
ZRNUT	CRL 5/16"-18 Rivet Nut	
8025	Sex Bolt for Hardware Mounting to 1-3/4" Thick Hollow Core Doors 1/4"-20 Thread Size	
TB2CH	Thru-Bolts for 3/8" or 1/2" Thick Glass Door Pull Mounting	Permits Mounting of Pulls to 3/8" or 1/2" (10 or 12 mm) Thick Glass Doors
TB4CH	Thru-Bolts for 1-3/4" or 1/2" Thick Door Pull Mounting	Permits Mounting of Pulls to 1-3/4" (45 mm) Thick Aluminum, Wood, or Hollow Metal Doors
F40WK	Replacement Washer Set for Back-to-Back Solid Pull Handle	Use with 1" (25.4) Dia. Commercial Door Pulls Good for 3/8" to 3/4" (9 to 19 mm) Thick Doors
F41WK	Replacement Washer Set for Back-to-Back Solid Pull Handle.	Use with 1" (25.4) Dia. Commercial Door Pulls Good for 1-1/2" to 2" (38 to 51 mm) Thick Doors
F40SK	Replacement Washer/Stud Kit for Single-Sided and Combination Commercial Door Pulls 3/8" to 3/4"	Use with 1" (25.4) Dia. Commercial Door Pulls. Works with 3/8" to 3/4" (9 to 19 mm) Thick Doors
F41SK	Replacement Washer/Stud Kit for Single-Sided and Combination Commercial Door Pulls 3/8" to 3/4"	Use with 1" (25.4) Dia. Commercial Door Pulls. Works with 1-1/2" to 2" (38 to 51 mm) Thick Doors
PR13400	Pro Series Mounting Hardware	Included with Pull Handle Series PR022/PR032
PR133 (Finish)	Pro Series Mounting Hardware	Included with Pull Handle Series PR033/PR034

CRL ALUMINUM DOOR MOUNTED STANDARD PULL HANDLES

FASTENERS



CAT. NO.
RN1420



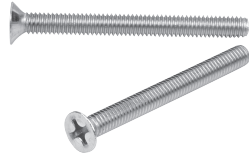
CAT. NO.
ZRNUT



CAT. NO.
8025



CAT. NO.
TB2CH



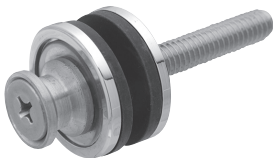
CAT. NO.
TB4CH



CAT. NO.
PR133 (Finish)



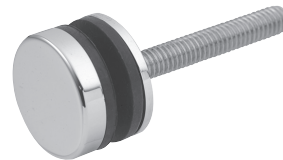
CAT. NO.
PR13400



CAT. NO.
F41WK



CAT. NO.
F40WK



CAT. NO.
F41SK



CAT. NO.
F40SK