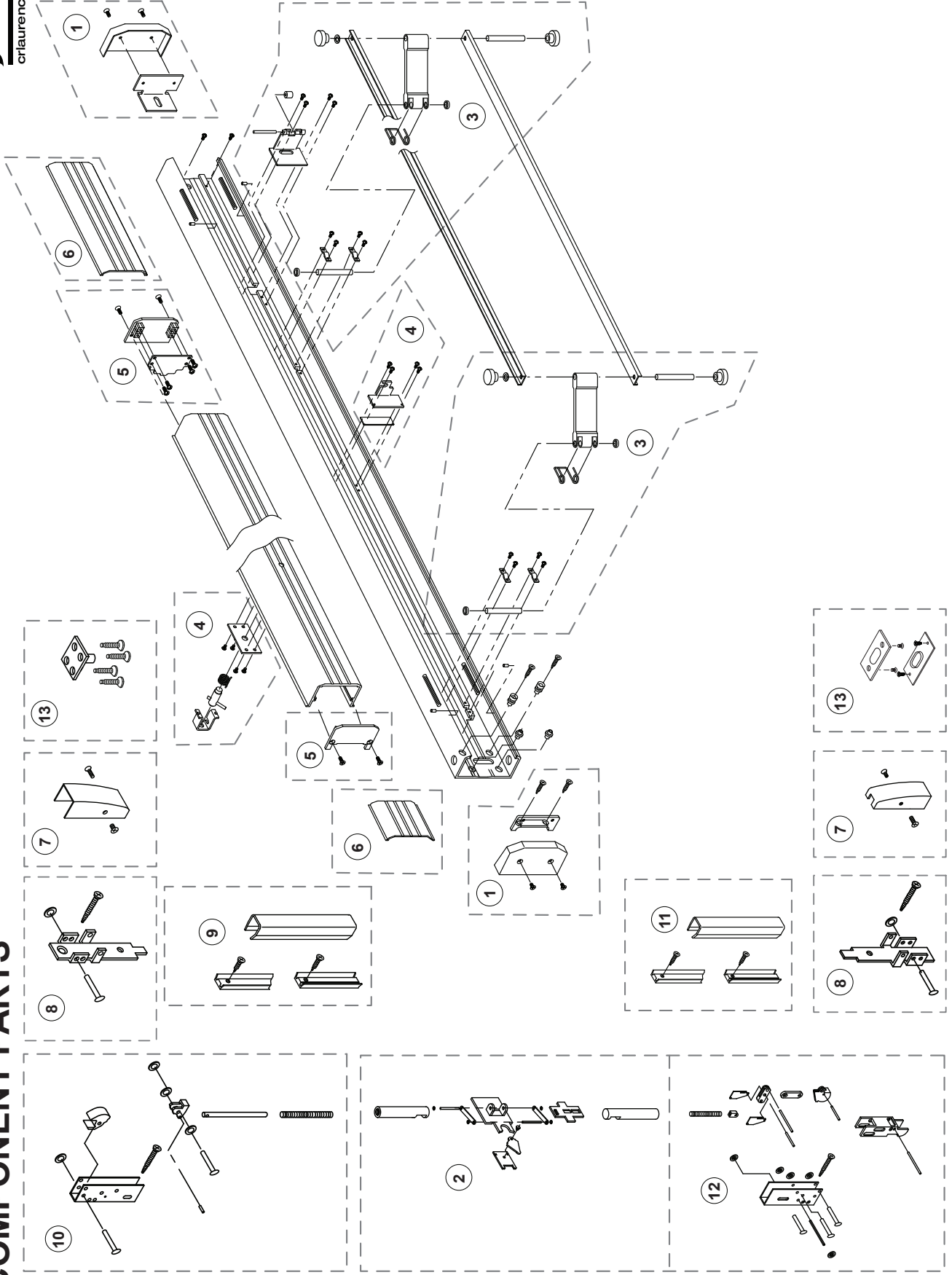


COMPONENT PARTS



COMPONENT PARTS

Assembly No.	Part No.	Description	Specify Finish No.
1	302652	Base End Cap Package	US28/628, DBZ/313
2	302741ASM	Cruciform Activation Assembly	
3	302664	Control Arm Hardware Package	
4	302670	Dogging Assembly	
5	302650	Push-Pad End Cap Package	US28/628, DBZ/313, CHAMP/690
6	302674	Base Cover Plate Package-Ribbed - 3/0 Panic	US28/628, DBZ/313, CHAMP/690
6	30267448	Base Cover Plate Package-Ribbed - 4/0 Panic	US28/628, DBZ/313, CHAMP/690
6	302674S	Base Cover Plate Package-Smooth - 3/0 Panic	US28/628, DBZ/313
7	302841	Latch Covers (Top and Bottom 2 Pkg.)	US28/628, DBZ/313
8	302408	Latch Bracket (2 Pkg.)	
9	3028527	Top Rod Cover Assembly - 7/0	US28/628, DBZ/313
9	3028528	Top Rod Cover Assembly - 8/0	US28/628, DBZ/313
9	3028529	Top Rod Cover Assembly - 9/0	US28/628, DBZ/313
10	3028477	Upper Rod and Latch Assembly - 7/0	
10	3028478	Upper Rod and Latch Assembly - 8/0	
10	3028479	Upper Rod and Latch Assembly - 9/0	
11	302856	Bottom Rod Cover Assembly	US28/628, DBZ/313
12	302854	Bottom Rod and Latch Assembly	
13	302113	Top and Bottom Strike Package	US28/628, DBZ/313
Not Shown	302572PKG	Cylinder Dogging Cam Package (6 Pkg.)	
Not Shown	302796	Dogging Hex Key Package (2 Pkg.)	