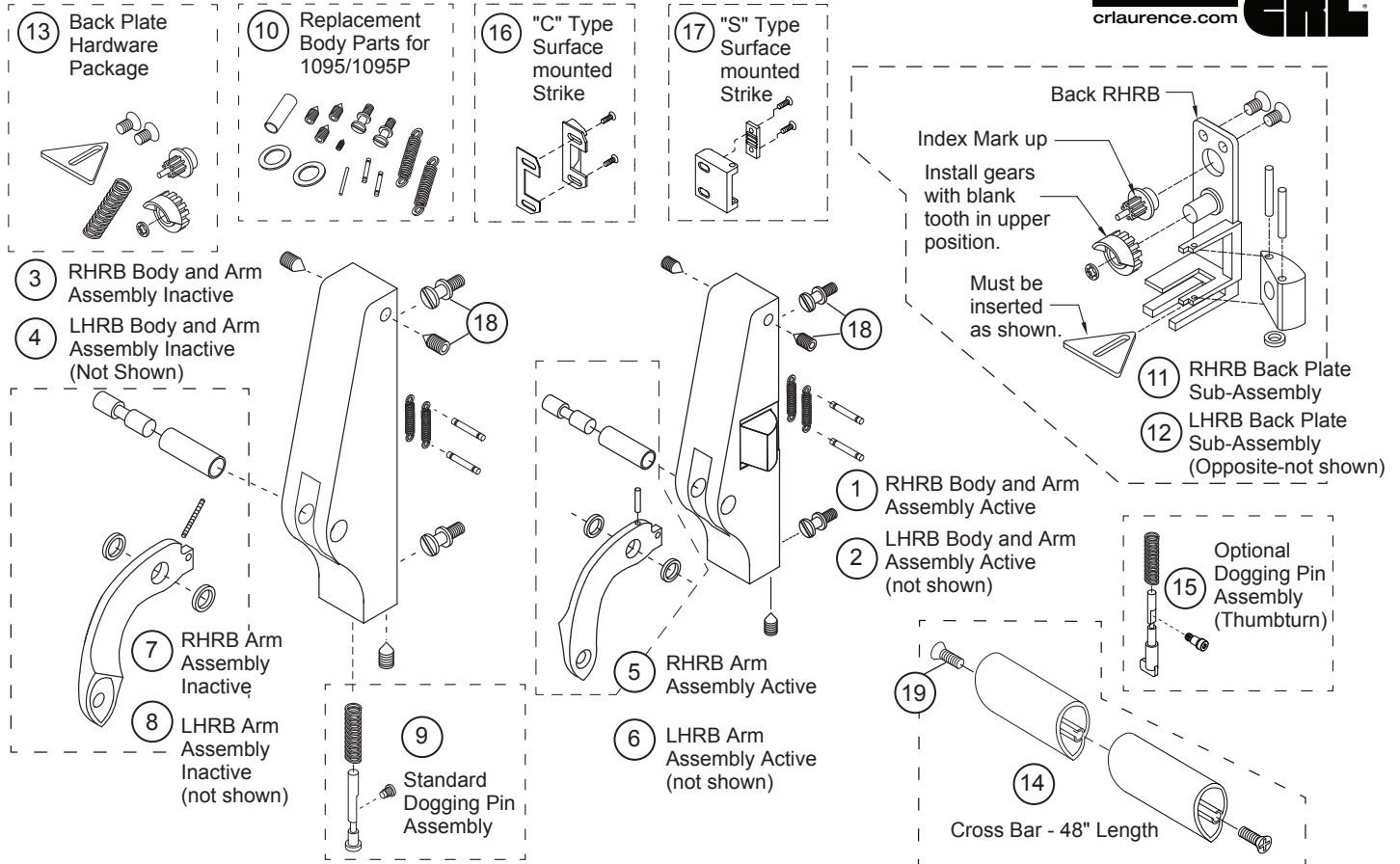
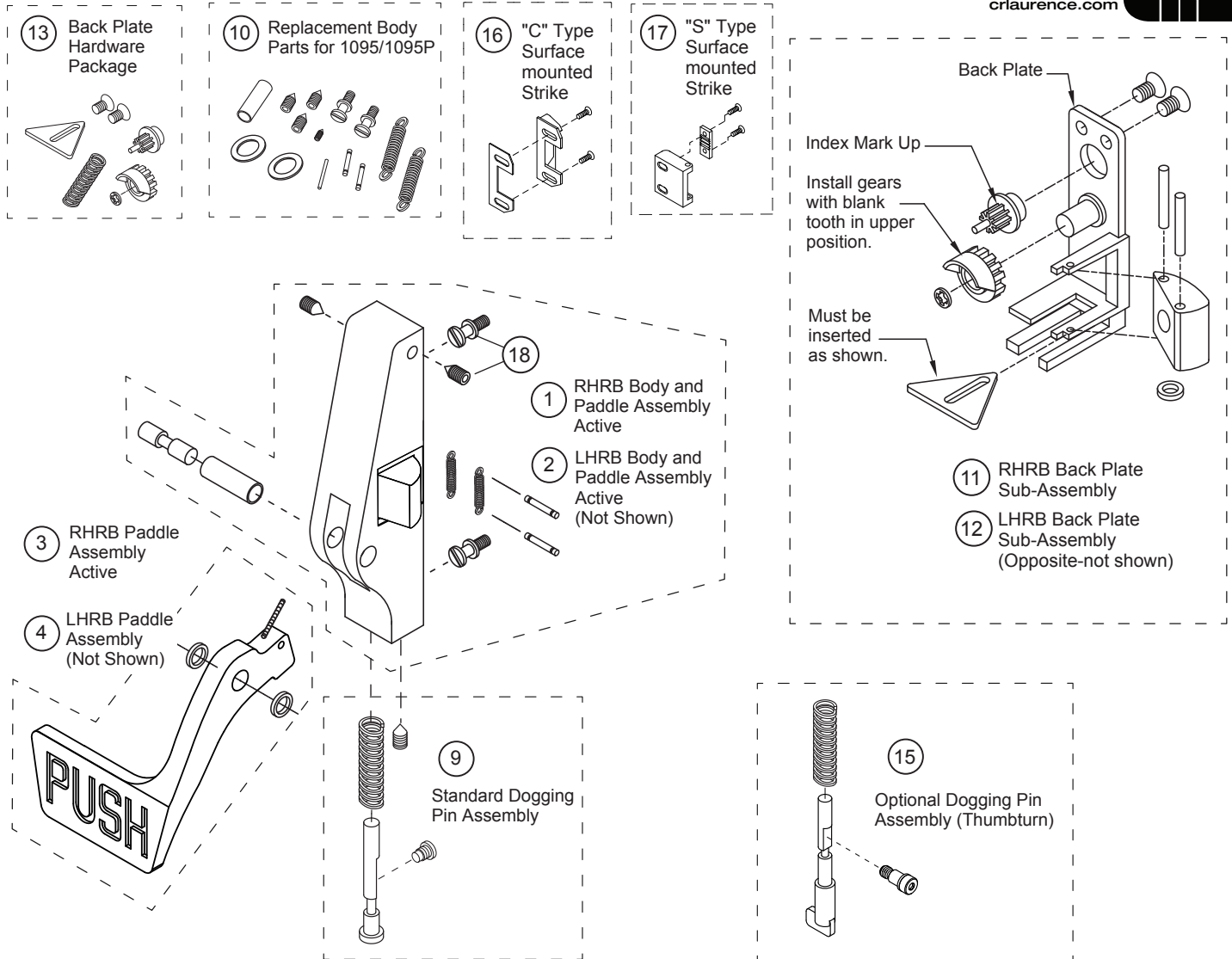


COMPONENT PARTS



Assembly No.	Part No.	Description	Specify Finish No.
1	30988	RHRB - Active Body and Arm Assembly	US28/628, DBZ/313, BLK/335
2	30989	LHRB - Active Body and Arm Assembly (not shown)	US28/628, DBZ/313, BLK/335
3	30990	RHRB - Inactive Arm Assembly	US28/628, DBZ/313, BLK/335
4	30991	LHRB - Inactive Arm Assembly (not shown)	US28/628, DBZ/313, BLK/335
5	301247	RHRB - Active Arm Assembly	US28/628, DBZ/313, BLK/335
6	301248	LHRB - Active Arm Assembly (not shown)	US28/628, DBZ/313, BLK/335
7	301242	RHRB - Inactive Arm Assembly	US28/628, DBZ/313, BLK/335
8	301243	LHRB - Inactive arm assembly (not shown)	US28/628, DBZ/313, BLK/335
9	301115	Standard Dogging Pin Assembly	
10	30851	Body Hardware Package	
11	30846	RHRB - Back Plate Sub - Assembly	US28/628, DBZ/313, BLK/335
12	30847	LHRB - Back Plate Sub - Assembly (not shown)	US28/628, DBZ/313, BLK/335
13	30852	Back Plate Hardware Package	
14	30733PKG	48" (1219 mm) Crossbar with Screws	US28/628, DBZ/313, BLK/335
15	301117	Dogging Pin Assembly - Thumbturn (Optional)	US28/628, DBZ/313, BLK/335
16	302436628	"C" Type - Surface Mounted Strike	
17	302501	"S" Type - Surface Mounted Strike	US28/628, DBZ-BLK/624
18	30SBPKG	Mounting Shoulder Bolt and Set Screw Package (12 ea)	
19	30744PKG	Crossbar Mounting Screw Package (12 Pkg.)	US28/628, DBZ-BLK/624

COMPONENT PARTS



Assembly No.	Part No.	Description	Specify Finish No.
1	30998	RHRB - Body and Paddle Assembly	US28/628, DBZ/313, BLK/335
2	30999	LHRB - Body and Paddle Assembly (not shown)	US28/628, DBZ/313, BLK/335
3	301245	RHRB - Paddle Assembly	US28/628, DBZ/313, BLK/335
4	301246	LHRB - Paddle Assembly (not shown)	US28/628, DBZ/313, BLK/335
9	301115	Standard Dogging Pin Assembly	
10	30851	Body Hardware Package	
11	30846	RHRB - Back Plate Sub-Assembly	US28/628, DBZ/313, BLK/335
12	30847	LHRB - Back Plate Hardware Sub-Assembly (not shown)	US28/628, DBZ/313, BLK/335
13	30852	Back Plate Hardware Package	
15	301117	Dogging Pin Assembly - Thumbturn (Optional)	US28/628, DBZ/313, BLK/335
16	302436628	"C" Type - Surface Mounted Strike	
17	302501	"S" Type - Surface Mounted Strike	DBZ-BLK/624, US26D/626,
18	30SBPKG	Mounting Shoulder Bolt and Set Screw Package (12 ea.)	